

Monthly Report on Short-term Transactions of Electricity in India

August, 2020



Economics Division
Central Electricity Regulatory Commission
36, Janpath, Chanderlok Building



Contents

S.No.	Contents	Page No
	Contents	i
	List of Tables and Figures	ii
	Abbreviations	iii
1	Introduction	1
2	Volume of Short-term Transactions of Electricity	1
3	Price of Short-term Transactions of Electricity	3
3.1	<i>Price of electricity transacted through Traders</i>	3
3.2	<i>Price of electricity transacted through Power Exchanges</i>	3
3.3	<i>Price of electricity transacted through DSM</i>	3
4	Trading Margin	3
5	Volume of Short-term Transactions of Electricity (Regional Entity-wise)	4
6	Congestion on Inter-State Transmission Corridor for Day-Ahead Market and Real Time Market on Power Exchanges	5
7	Volume and Price of Renewable Energy Certificates (RECs)	5
8	Inferences	6

List of Tables and Figures

S. No.	List of Tables and Figures	Page No.
I List of Tables		
Table-1	Volume of Short-term Transactions of Electricity in India	8
Table-2	Percentage Share of Electricity Transacted by Trading Licensees	10
Table-3	Price of Electricity Transacted through Traders	11
Table-4	Price of Electricity Transacted through Traders (Time-wise)	11
Table-5	Price of Electricity Transacted in Day Ahead Market through Power Exchanges	11
Table-6	Price of Electricity Transacted in Real Time Market through Power Exchanges	11
Table-7	Volume and Price of Electricity in Term Ahead Market of IEX	12
Table-8	Volume and Price of Electricity in Term Ahead Market of PXIL	12
Table-9	Volume and Price of Electricity in Green Term Ahead Market of IEX	12
Table-10	Price of Electricity Transacted through DSM	12
Table-11	Volume of Electricity Sold through Bilateral	14
Table-12	Volume of Electricity Purchased through Bilateral	15
Table-13	Volume of Electricity Sold in Day Ahead Market through Power Exchanges	16
Table-14	Volume of Electricity Purchased in Day Ahead Market through Power Exchanges	18
Table-15	Volume of Electricity Sold in Real Time Market through Power Exchanges	19
Table-16	Volume of Electricity Purchased in Real Time Market through Power Exchanges	21
Table-17	Volume of Electricity Under drawal through DSM	22
Table-18	Volume of Electricity Over drawal through DSM	25
Table-19	Total Volume of Net Short-term Transactions of Electricity (Regional Entity-wise)	28
Table-20	Details of Congestion in Power Exchanges	31
Table-21	Volume of Short-term Transactions of Electricity in India (Day-wise)	32
Table-22	Price of Electricity in Day Ahead Market and DSM (Day-wise)	33
Table-23	Price of Electricity in Real Time Market (Day-wise)	34
Table-24	Volume of Short-term Transactions of Electricity (Regional Entity-wise)	35
II List of Figures		
Figure-1	Volume of Various Kinds of Electricity Transactions in Total Electricity Generation	8
Figure-2	Volume of Short-term Transactions of Electricity	8
Figure-3	Volume transacted in different markets segments on Power Exchanges	9
Figure-4	Volume of Short-term Transactions of Electricity (Day-wise)	9
Figure-5	Percentage Share of Electricity Transacted by Trading Licensees	10
Figure-6	Price of Short-term Transactions Electricity	13
Figure-7	Price of Short-term Transactions Electricity (Day-wise)	13

Abbreviations

Abbreviation	Expanded Version
ABSP_ANTP	Acme Bhiwadi Solar Power Private Limited, Anantpur
ACBIL	ACB (India) Limited
ACP	Area Clearing Price
ACV	Area Clearing Volume
ACME_SLR	ACME Solar Power Project
ACME_RUMS	Acme Rewa Ultra Mega Solar Project
ADANI GREEN	Adani Green Energy Limited
ADY1_PVGD	Adyah Solar Energy Pvt Ltd., Block 1 Pavagada Solar Park
ADY2_PVGD	Adyah Solar Energy Pvt Ltd., Block 2 Pavagada Solar Park
ADY3_PVGD	Adyah Solar Energy Pvt Ltd., Block 3 Pavagada Solar Park
ADY6_PVGD	Adyah Solar Energy Pvt Ltd., Block 6 Pavagada Solar Park
ADY10_PVGD	Adyah Solar Energy Pvt Ltd., Block 10 Pavagada Solar Park
ADY13_PVGD	Adyah Solar Energy Pvt Ltd., Block 13 Pavagada Solar Park
AGEMPL BHUJ	Adani Green Energy (MP) Ltd., Bhuj
AHSP_ANTP	Acme Hisar Solar Power Private Limited, Anantpur
AKS_PVGD	ACME Kurukshetra Solar Energy Pvt. Ltd
AKSP_ANTP	Acme Karnal Solar Power Private Limited, Anantpur
ALFANAR_BHUJ	Alfanar Group Wind Project, Bhuj, Gujarat
AMPS Hazira	Arcelor Mittal Nippon Steel, Hazira
APTEL	Appellate Tribunal for Electricity
ARERJL_SLR	Adani Renewable Energy Park Rajasthan Ltd.
ARINSUM_RUMS	Solenergi Rewa Ultra Mega Solar Project
ARS_PVGD	ACME REWARI Solar Power Pvt Ltd.
AVAADA1_PVGD	Avaada Solar Energy Private Ltd., Pavagada Project 1
AVAADA2_PVGD	Avaada Solar Energy Private Ltd., Pavagada Project 2
AZURE_ANTP	Azure Power, Anantpur
AZURE_PVGD	Azure Power, Pavagada
AZURE_SLR	Azure Power Solar Power Project
AZURE34_SLR	Azure Power 34 Pvt. Ltd. Solar Power Project
BALCO	Bharat Aluminum Company Limited
BARC	Bhabha Atomic Research Centre
BBMB	Bhakra Beas Management Board
BETAM_TCN	Betam Wind Energy Private Limited, Tuticorin
BHADRAVATHI HVDC	Bhadravathi High Voltage Direct Current Link
BRBCL	Bhartiya Rail Bijlee Company Limited
CEA	Central Electricity Authority
CERC	Central Electricity Regulatory Commission
CGPL	Coastal Gujarat Power Limited
CHUKHA HEP	Chhukha Hydroelectric Project, Bhutan
CHUZACHEN HEP	Chuzachen Hydro Electric Power Project
CLEAN_SLR	Clean Solar Power Pvt. Ltd
COASTGEN	Coastal Energen Private Limited
DAGACHU	Dagachhu Hydro Power Corporation
DAM	Day Ahead Market
DB POWER	Diligent Power Pvt. Ltd.
DCPP	Donga Mahua Captive Power Plant
DGEN MEGA POWER	DGEN Mega Power Project
DHARIWAL POWER	Dhariwal Power Station

DIKCHU HEP	Dikchu Hydro-electric Project, Sikkim
DOYANG HEP	Doyang Hydro Electric Project
DSM	Deviation Settlement Mechanism
DVC	Damodar Valley Corporation
EMCO	EMCO Energy Limited
ESSAR POWER	Essar Power Limited
ESSAR STEEL	Essar Steel Ltd
FORTUM1_PVGD	Fortum Finnsurya Energy Private Ltd, Pavagada Project 1
FORTUM2_PVGD	Fortum Finnsurya Energy Private Ltd, Pavagada Project 2
FRV_ANTP	Fotowatio Renewable Ventures, Anantapur
FRV_NPK	Fotowatio Renewable Ventures,N P Kunta
GIWEL_BHUJ	Green infra wind energy Limited, Bhuj
GIWEL_TCN	Green Infra Wind Energy Limited,Tuticorin
GMR CHHATTISGARH	GMR Chhattisgarh Energy Limited
GMR KAMALANGA	GMR Kamalanga Energy Ltd.
G-TAM	Green Term Ahead Market
HVDC ALPD	Alipurduar High Voltage Direct Current Link
HVDC CHAMPA	Champa-Kurukshetra High Voltage Direct Current Link
HVDC PUS	Pasauli High Voltage Direct Current Link
HVDC RAIGARH	Raigarh-Pugalur High Voltage Direct Current Link
IEX	Indian Energy Exchange Limited
IGSTPS	Indira Gandhi Super Thermal Power Station Jhajjar
IL&FS	Infrastructure Leasing & Financial Services Limited
INOX_BHUJ	INOX Wind Limited, Bhuj, Gujarat
J&K	Jammu & Kashmir
JAYPEE NIGRIE	Jaypee Nigrie Super Thermal Power Project
JHABUA POWER MP	Jhabua Thermal Power Project
JINDAL POWER	Jindal Power Limited
JINDAL STAGE-II	Jindal Power Ltd Stage II
JITPL	Jindal India Thermal Power Ltd.
JORETHANG	Jorethang Loop Hydroelectric Power Project
KAPP 3&4	Kakrapar Atomic Power Station Unit 3 & 4
KARCHAM WANGTOO	Karcham Wangtoo H.E. Project
KORBA WEST POWER	Korba West Power Company Limited
KOTESHWAR	Koteshwar Hydro Power project
KREDL_PVGD	Karnataka Renewable Energy Development Ltd, Pavagada
KSK MAHANADI	KSK Mahanadi Power Ltd
KSMPL_SLR	Kilaj Solar (Maharashtra) Private Limited
KURICHU HEP	Kurichhu Hydro-electric Power Station, Bhutan
LANCO_AMK	Lanco Amarkantak Power Private Limited
LANCO BUDHIL	Lanco Budhil Hydro Power Private Limited
LANCO KONDAPALLY	Lanco Kondapally Power Private Limited
LOKTAK	Loktak Power Project
MAHINDRA_RUMS	Mahindra Rewa Ultra Mega Solar Project
MAHOBASLR	Mahoba Solar Power Project
MALANA	Malana Hydroelectric Plant
MANGDECHU HEP	Mangdechhu Hydroelectric Project, Mangdechhu River, Bhutan
Maruti Coal	Maruti Clean Coal and Power Limited
MB POWER	MB Power Ltd
MEENAKSHI	Meenakshi Energy Private Limited

MP	Madhya Pradesh
MTPS II	Muzaffarpur Thermal Power Station – Stage II
MYTRAH_TCN	Mytrah Energy (India) Private Limited, Tuticorin
Mus	Million Units
NAPP	Narora Atomic Power Plant
NEEPCO	North Eastern Electric Power Corporation Limited
NEP	Nepal
NFL	National Fertilisers Limited
NHPC STATIONS	National Hydro Electric Power Corporation Ltd. Stations
NJPC	Nathpa Jhakri Hydroelectric Power Station
NLC	Neyveli Lignite Corporation Limited
NLDC	National Load Dispatch Centre
NPGC	Nabinagar Power Generating Company (Pvt.) Limited
NSPCL	NTPC - SAIL Power Company Private Limited
NTECL Vallur	NTPC Tamil Nadu Energy Company Limited Vallur
NTPC_ANTP	NTPC Anantapur
NTPC STATIONS	National Thermal Power Corporation Ltd. Stations
NTPL	NLC Tamil Nadu Power Limited
NVVN	NTPC Vidyut Vyapar Nigam Limited
ONGC Platana	ONGC Tripura Power Company
OPGC	Odisha Power Generation Corporation
ORANGE_TCN	Orange Renewable Power Pvt. Ltd, Tuticorin
OSTRO	Ostro Energy Private Limited
OTC	Over The Counter
PARAM_PVGD	Parampujya Solar Energy Private Ltd
PARE HEP	Pare hydroelectric project, Arunachal Pradesh
PX	Power Exchange
PXIL	Power Exchange India Limited
RAIL	Indian Railways
RAMPUR HEP	Rampur Hydro Electric Power Project
RANGIT HEP	Rangit Hydroelectric power project
RANGANADI HEP	Ranganadi Hydro Electric Power Project, Arunachal Pradesh
RAP-B	Rajasthan Atomic Power Plant-B
RAP-C	Rajasthan Atomic Power Plant-C
REC	Renewable Energy Certificate
REGL	Raigarh Energy Generation Limited
RENEW_BHACHAU	ReNew Power Limited, Bhachau
RENEW_PVGD	ReNew Wind Energy (TN2) Private Limited
RENEW_SLR	Renew Solar
RENEW_SLR_BKN	Renew Solar Bikaner
RGPPL	Ratnagiri Gas and Power Private Limited
RLDC	Regional Load Dispatch Centre
RPREL	Raipur Energen Limited
RTC	Round The Clock
RTM	Real Time Market
Sasan UMPP	Sasan Ultra Mega Power Project
SB_SLR	Soft Bank Solar
SBG CLEANTECH_SLR	SBG Cleantech Ltd
SBG_NPK	SB Energy Solar Private Limited, NP Kunta
SBG_PVGD	SB Energy Solar Private Limited, Pavagada

SEMBCORP	Sembcorp Gayatri Power Ltd
SHREE CEMENT	Shree Cement Limited
SIMHAPURI	Simhapuri Energy Private Limited
SKS Power	SKS Power Generation Chhattisgarh Limited
SPECTRUM	Spectrum Power Generation Ltd
TALA HEP	Tala Hydroelectric Project, Bhutan
TASHIDENG HEP	Tashiding Hydro Electric Project, Sikkim
TATA_ANTP	TATA Power Anantapur
TATA_PVGD	Tata Power Renewable Energy Ltd
TATA_SLR	Tata Solar
TEESTA STG3	Teesta Stage 3 Hydro Power Project
TEHRI	Tehri Hydro Electric Power Project
TAM	Term Ahead Market
THERMAL POWERTECH	Thermal Powertech Corporation India Limited
URI-II	Uri-II Hydropower Project
VINDHYACHAL HVDC	Vindhyachal High Voltage Direct Current Link
YARROW_PVGD	Yarrow Infra Structure Private Ltd

1. Introduction

1.1. A well-functioning electricity market requires an effective market monitoring process. As part of the market monitoring process, the monthly report on short-term transactions of electricity, is being prepared and posted on the website of CERC since August 2008. Here, “short-term transactions of electricity” refers to the contracts of less than one year period, for electricity transacted (inter-State) through inter-State Trading Licensees and directly by the Distribution Licensees, Power Exchanges (Indian Energy Exchange Ltd (IEX) and Power Exchange India Ltd (PXIL), and Deviation Settlement Mechanism (DSM). The objectives of the report are: (i) to observe the trends in volume and price of the short-term transactions of electricity; (ii) to analyse competition among the market players; (iii) to analyse effect of congestion on volume of electricity transacted through power exchanges; (iv) to provide information on volume and price of Renewable Energy Certificates (RECs) transacted through power exchanges; and (v) to disclose/disseminate all relevant market information. The details of the report for the month of **August, 2020** are as under:

2. Volume of Short-term Transactions of Electricity

2.1. During August 2020, total electricity generation excluding generation from renewable and captive power plants in India was 103411.36 MUs (Table-1). Of the total electricity generation, 11.62% was transacted through short-term, comprising of 5.18% through Day Ahead Market (DAM) and Real Time Market (RTM) of power exchanges, followed by 4.44% through bilateral (through traders and term-ahead contracts on power exchanges and directly between distribution companies) and 2.00% through DSM (Table-1 & Figure-1).

2.2. Of the total short-term transactions (12015.50 MUs), the electricity transacted in DAM and RTM of power exchanges constitutes 44.60%, followed by 38.21% through bilateral (25.50% through traders and term-ahead contracts on power exchanges and 12.71% directly between distribution companies) and 17.19% through DSM (Table-1 & Figure-2). Daily volume of short-term transactions is shown in Table-21 & Figure-4.

2.3. Of the total volume of electricity transacted through power exchanges, 77.51% of the volume was transacted in DAM, followed by 14.83% in RTM and 7.66% in Term Ahead Market (TAM) (Figure-3).

2.4. The percentage share of electricity traded by each trading licensee in the total volume of electricity traded by all the trading licensees is provided in Table-2 & Figure-5. The volume of electricity transacted by the trading licensees includes bilateral transactions and the transactions undertaken through power exchanges. There were 34 trading licensees as on August 2020. In August 2020, 24 trading licensees were engaged in short term trading. Top 5 trading licensees had a share of 76.57% in the total volume traded by all the licensees. These are PTC India Ltd., GMR Energy Trading Ltd., Manikaran Power Ltd., Adani Enterprises Ltd. and NTPC Vidyut Vyapar Nigam Ltd.

2.5. Herfindahl-Hirschman Index (HHI) has been used for measuring the competition among the trading licensees. Increase in the HHI generally indicates decrease in competition and increase of market concentration, and vice versa. The HHI below 0.15 indicates non-concentration, HHI between 0.15 and 0.25 indicates moderate concentration and HHI above 0.25 indicates high concentration. The HHI has been computed based on the volume of electricity traded (inter-State & intra-State) by inter-State trading licensees, and it was 0.2407 for the month of August 2020, which indicates moderate concentration of market power (Table-2).

2.6. The volume of electricity transacted in the DAM of IEX and PXIL was 4484.36 MUs and 14.10 MUs respectively. The volume of total buy bids and sell bids was 5081.24 MUs and 10123.13 MUs respectively in IEX, while the same was 19.39 MUs and 81.13 MUs respectively in PXIL.

2.7. The volume of electricity transacted in the RTM of IEX was 860.57 MUs. No electricity was transacted in the RTM of PXIL. The volume of total buy bids and sell bids was 1061.62 MUs and 2503.03 MUs respectively in IEX, while there we no bids in PXIL. The variation in the volume of buy bids and sell bids placed through power exchanges shows variation in the demand and supply position.

2.8. The volume of electricity transacted in the TAM of IEX and PXIL was 120.52 MUs and 321.22 MUs respectively (Table-7 & Table-8). The volume of electricity transacted in the Green Term Ahead Market (G-TAM) of IEX was 2.66 MUs (Table-9).

3. Price of Short-term Transactions of Electricity

3.1. **Price of electricity transacted through Traders:** The minimum, maximum and weighted average sale prices have been computed for the electricity transacted through traders and the sale prices were ₹2.67/kWh, ₹5.12/kWh and ₹3.67/kWh respectively (Table-3). The weighted average sale prices were also computed for the electricity transacted during Round the Clock (RTC), Peak and Off-peak periods separately, and the sale prices were ₹3.76/kWh, ₹4.18/kWh and ₹3.54/kWh respectively (Table-4).

3.2. **Price of electricity transacted through Power Exchanges:** The minimum, maximum and weighted average prices for the electricity transacted in the DAM of IEX were ₹0.68/kWh, ₹4.93/kWh and ₹2.53/kWh respectively. These prices in the DAM of PXIL were ₹2.00/kWh, ₹4.18/kWh and ₹2.79/kWh respectively (Table-5). The minimum, maximum and weighted average prices for the electricity transacted in the RTM of IEX were ₹0.10/kWh, ₹5.21/kWh and ₹2.36/kWh respectively (Table-6). The price of electricity transacted in the TAM of IEX and PXIL was ₹2.77/kWh and ₹2.54/kWh respectively (Table-7 and Table-8). The price of electricity transacted in the G-TAM of IEX was ₹3.06/kWh (Table-9).

3.3. **Price of electricity transacted through DSM:** The minimum, maximum and average price of DSM was ₹0.00/kWh and ₹8.00/kWh ₹2.83/kWh respectively (Table-10).

3.4. The prices of electricity transacted through trading licensees, power exchanges and DSM and their comparison is shown in Table-22 & 23, Figure-6 & 7.

4. Trading Margin

4.1. As per the CERC (Procedure, Terms and Conditions for grant of trading licence and other related matters) Regulations 2020, the trading licensees are allowed to charge trading margin of not less than 0 paise/kWh and up to 7 paise/kWh. The weighted average trading margin charged by the trading licensees for bilateral transactions during the month was ₹0.022/kWh.

5. Volume of Short-term Transactions of Electricity (Regional Entity¹-Wise)

5.1. Of the total bilateral transactions, top 5 regional entities sold 50.75% of the volume, and these were Himachal Pradesh, Madhya Pradesh, Tamil Nadu, Sembcorp Gayatri Power Ltd. and Uttarakhand. Top 5 regional entities purchased 77.09% of the volume, and these were Punjab, Haryana, Delhi, Uttar Pradesh and Telangana (Table-11 & 12).

5.2. Of the total DAM transactions of power exchanges, top 5 regional entities sold 41.26% of the volume, and these were Teesta Stage 3 Hydro Power Project, Himachal Pradesh, Odisha, Jaypee Nigrie Super Thermal Power Project and Jammu & Kashmir. Top 5 regional entities purchased 58.05% of the volume, and these were Haryana, Maharashtra, Gujarat, Telangana and Tamil Nadu (Table-13 & 14).

5.3. Of the total RTM transactions of power exchanges, top 5 regional entities sold 55.78% of the volume, and these were Jammu & Kashmir, Karnataka, Neyveli Lignite Corporation Limited, Madhya Pradesh and Odisha. Top 5 regional entities purchased 66.99% of the volume, and these were Telangana, West Bengal, Haryana, Rajasthan and Maharashtra (Table-15 & 16).

5.4. Of the total DSM transactions, top 5 regional entities under drew 25.10% of the volume, and these were NTPC Stations (Western Region), Rajasthan, Tamil Nadu, Madhya Pradesh and Maharashtra (Table-17). Top 5 regional entities overdrew 24.04% of the volume, and these were Tala Hydroelectric Project-Bhutan, Haryana, Uttar Pradesh, West Bengal and Bihar (Table-18).

5.5. The total volume of net short-term transactions of electricity (Regional entity-wise) i.e. volume of net transactions through bilateral, power exchanges and DSM is shown in Table-19 & 24. Top 5 electricity selling regional entities were Himachal Pradesh, Teesta Stage 3 Hydro Power Project, Madhya Pradesh, Sembcorp Gayatri Power Ltd. and Jammu & Kashmir. Top 5 electricity purchasing regional entities were Haryana, Punjab, Telangana, Delhi and Uttar Pradesh.

¹ In case of a state, the entities which are “selling” also include generators connected to state grid and the entities which are “buying” also include open access consumers.

6. Congestion² on Inter-State Transmission Corridor for Day-Ahead Market and Real Time Market on Power Exchanges

6.1. The power exchanges use a price discovery mechanism in which the aggregate demand and supply are matched to arrive at an unconstrained market price and volume. This step assumes that there is no congestion in the inter-State transmission system between different regions. However, in reality, the system operator (NLDC) in coordination with RLDCs limits the flow (due to congestion) in the inter-State transmission system. In such a situation, power exchanges adopt a mechanism called “Market Splitting”³.

6.2. In the month of August 2020, congestion did not occur in the DAM and RTM of both IEX and PXIL. The details of congestion are shown in Table-20. The volume of electricity that could not be cleared due to congestion & other reasons and could not be transacted through power exchanges is the difference between unconstrained cleared volume and actual cleared volume.

7. Volume and Price of Renewable Energy Certificates (RECs)

7.1. The concept of Renewable Energy Certificates (RECs) seeks to address mismatch between availability of renewable energy and the requirement of the obligated entities to meet their renewable purchase obligation by purchasing green attributes of renewable energy remotely located in the form of RECs. The REC mechanism is a market based instrument, to promote renewable sources of energy and development of electricity market.

² “Congestion” means a situation where the demand for transmission capacity exceeds the available transfer capability

³ “Market Splitting” is a mechanism adopted by Power Exchange where the market is split in the event of transmission congestion, into predetermined (by NLDC) bid areas or zones, which are cleared individually at their respective area prices such that the energy balance in every bid area is reached based upon the demand and supply in individual bid areas and using the available transmission corridor capacity between various bid areas simultaneously”
As a result of this market splitting the price of electricity in the importing region, where demand for electricity is more than supply, becomes relatively higher than the price of electricity in the exporting region.

7.2. One REC is equivalent to 1 MWh electricity injected into the grid from renewable energy sources. The REC is exchanged only in the power exchanges approved by CERC within the band of a floor price and forbearance (ceiling) price as notified by CERC from time to time. The first REC trading was held on power exchanges in May, 2011.

7.3. There were no transactions of REC in the month of August, 2020 as the scheduled trading was further postponed by Hon'ble APTEL in matter of the CERC order fixing new floor and forbearance price for both Solar and Non-solar RECs.

8. Inferences:

- (1) The percentage of short-term transactions of electricity to total electricity generation was 11.62%.
- (2) Of the total short-term transactions, the electricity transacted in DAM and RTM of power exchanges constitutes 44.60%, followed by 38.21% through bilateral (25.50% through traders and term-ahead contracts on power exchanges and 12.71% directly between distribution companies) and 17.19% through DSM.
- (3) Of the total volume transacted through the power exchanges, 77.51% of the volume was transacted in DAM, followed by 14.83% in RTM and 7.66% in TAM.
- (4) Top 5 trading licensees had a share of 76.57% in the total volume traded by all the trading licensees.
- (5) The Herfindahl Hirschman Index computed for the volume of electricity traded by trading licensees was 0.2407, indicating moderate concentration of market power.
- (6) The weighted average price of electricity transacted through trading licensees was ₹3.67/kWh.
- (7) The weighted average price of electricity transacted in DAM of IEX and PXIL was ₹2.53/kWh and ₹2.79/kWh. The weighted average price of electricity transacted in RTM of IEX was ₹2.36/kWh. No electricity was transacted in the RTM of PXIL.
- (8) The average price of electricity transacted through DSM was ₹2.83/kWh.

- (9) The weighted average trading margin charged by the trading licensees for bilateral transactions was ₹0.022/kWh. The trading margin charged during the month was in line with the Trading Margin regulations.
- (10) Top 5 electricity selling regional entities were Himachal Pradesh, Teesta Stage 3 Hydro Power Project, Madhya Pradesh, Sembcorp Gayatri Power Ltd. and Jammu & Kashmir. Top 5 electricity purchasing regional entities were Haryana, Punjab, Telangana, Delhi and Uttar Pradesh.
- (11) During August 2020, congestion did not occur in the DAM and RTM of both IEX and PXIL.
- (12) There were no transactions of REC in the month of August, 2020 as the scheduled trading was further postponed by the order of Hon'ble APTEL.

Table-1: VOLUME OF SHORT-TERM TRANSACTIONS OF ELECTRICITY IN INDIA, AUGUST 2020				
Sr.No	Short-term transactions	Volume (MUs)	% to Volume of short-term transactions	% to Total Generation
1	Bilateral	4591.19	38.21	4.44
	(i) Through Traders and PXs	3063.71	25.50	2.96
	(ii) Direct	1527.48	12.71	1.48
2	Through Power Exchanges	5359.04	44.60	5.18
	(i) IEX			
	(a) DAM	4484.36	37.32	4.34
	(b) RTM	860.57	7.16	0.83
	(ii) PXIL			
	(a) DAM	14.10	0.12	0.01
	(b) RTM	0.00	0.00	0.00
3	Through DSM	2065.28	17.19	2.00
	Total	12015.50	-	11.62
	Total Generation	103411.36	-	-

Source: NLDC

Figure-1: Volume of Various Kinds of Electricity Transactions in Total Electricity Generation, August 2020

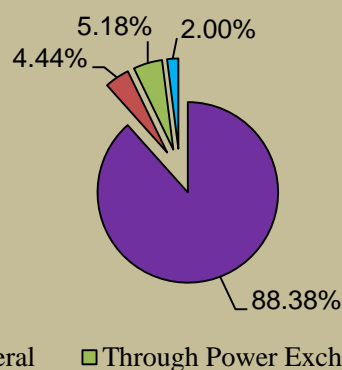


Figure-2: Volume of Short-term Transactions of Electricity, August 2020

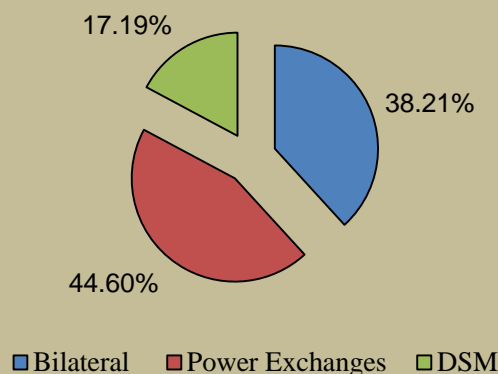


Figure-3: Volume transacted in different markets segments on Power Exchanges, August 2020

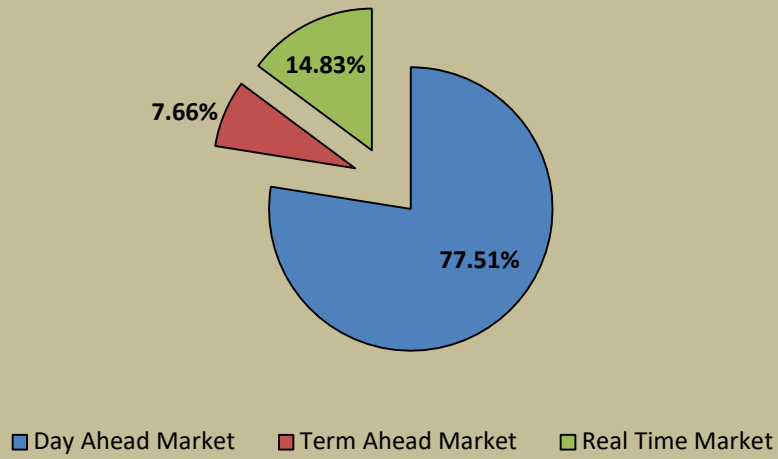


Figure-4: Volume of Short-term Transactions of Electricity, August 2020 (Day-wise)

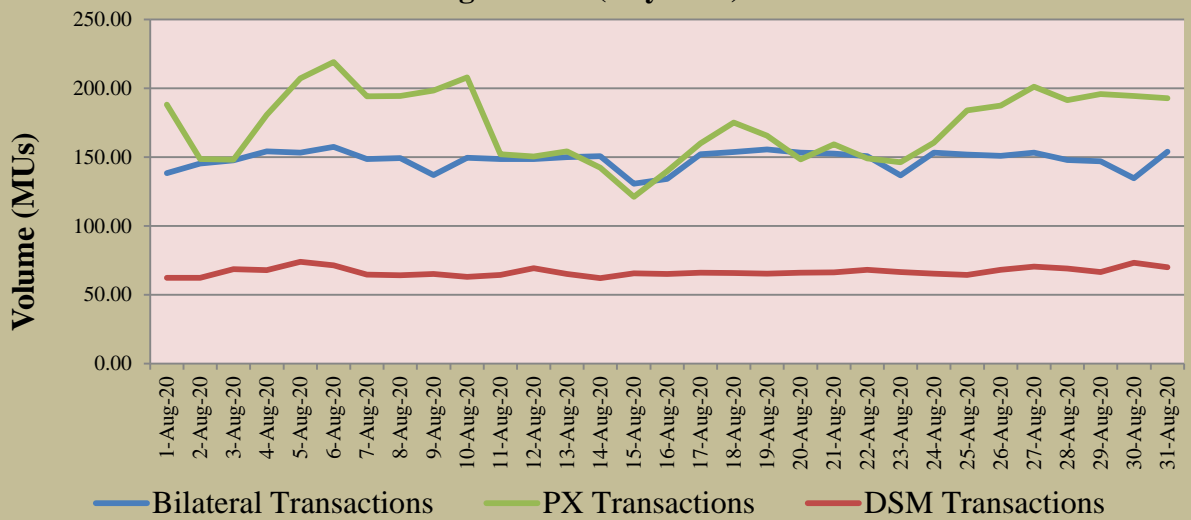


Table-2: PERCENTAGE SHARE OF ELECTRICITY TRANSACTED BY TRADING LICENSEES, AUGUST 2020			
Sr.No	Name of the Trading Licensee	% Share in total Volume transacted by Trading Licensees	Herfindahl-Hirschman Index
1	PTC India Ltd.	45.40	0.2061
2	GMR Energy Trading Ltd.	10.11	0.0102
3	Manikaran Power Ltd.	8.19	0.0067
4	Adani Enterprises Ltd.	6.59	0.0043
5	NTPC Vidyut Vyapar Nigam Ltd.	6.27	0.0039
6	Arunachal Pradesh Power Corporation (P) ltd	5.55	0.0031
7	Kreate Energy (I) Pvt. Ltd.	5.28	0.0028
8	Tata Power Trading Company (P) Ltd.	5.07	0.0026
9	Essar Electric Power Development Corp. Ltd.	2.11	0.0004
10	Statkraft Markets Pvt. Ltd.	1.58	0.0002
11	National Energy Trading & Services Ltd.	0.91	0.0001
12	RPG Power Trading Company Ltd.	0.62	0.0000
13	Instinct Infra & Power Ltd.	0.57	0.0000
14	Knowledge Infrastructure Systems (P) Ltd	0.53	0.0000
15	Gita Power & Infrastructure Private Limited	0.39	0.0000
16	JSW Power Trading Company Ltd	0.27	0.0000
17	Jaiprakash Associates Ltd.	0.13	0.0000
18	Abja Power Private Limited	0.10	0.0000
19	Customized Energy Solutions India (P) Ltd.	0.09	0.0000
20	NHPC Limited	0.08	0.0000
21	IPCL Power Trading Pvt. Ltd.	0.07	0.0000
22	Phillip Commodities India (P) Ltd.	0.04	0.0000
23	Shree Cement Ltd.	0.03	0.0000
24	NLC India Ltd.	0.01	0.0000
TOTAL		100.00%	0.2407
Top 5 trading licensees		76.57%	
<i>Note 1: Volume of electricity transacted by the trading licensees includes bilateral transactions (inter-state & intra-state) and the transactions undertaken through power exchanges.</i>			
<i>Note 2: Volume of electricity transacted by Global Energy Ltd is not included.</i>			
<i>Source: Information submitted by trading licensees</i>			

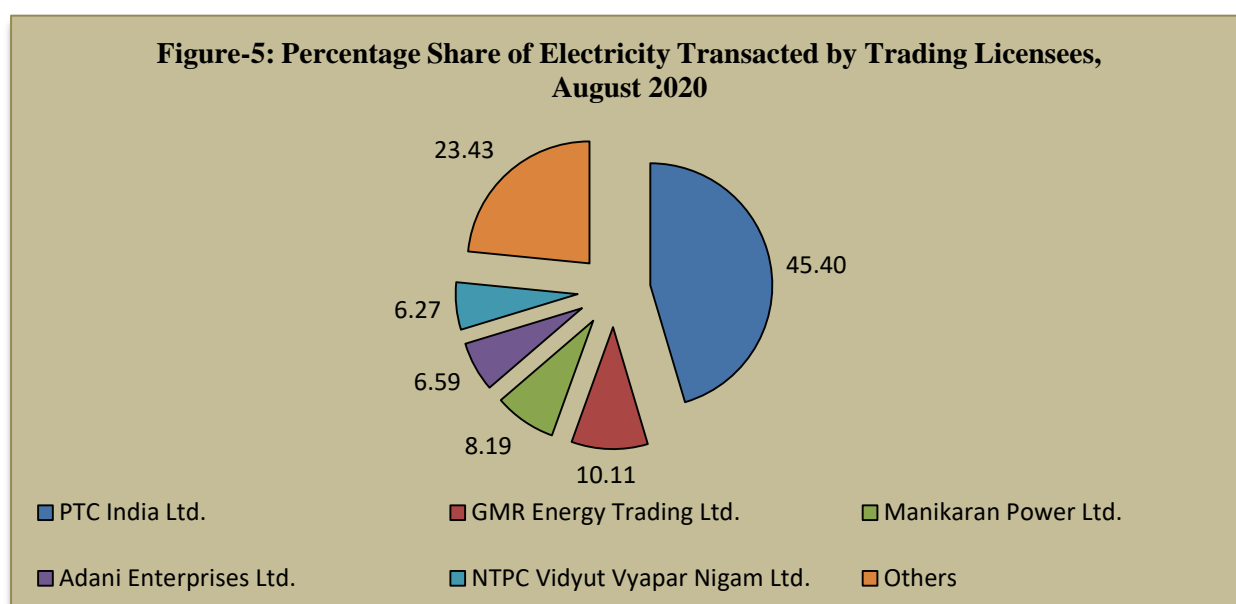


Table-3: PRICE OF ELECTRICITY TRANSACTED THROUGH TRADERS, AUGUST 2020		
Sr.No	Item	Sale Price of Traders (₹/kWh)
1	Minimum	2.67
2	Maximum	5.12
3	Weighted Average	3.67

Source: Information submitted by trading licensees

Table-4: PRICE OF ELECTRICITY TRANSACTED THROUGH TRADERS (TIME-WISE), AUGUST 2020		
Sr.No	Period of Trade	Sale Price of Traders (₹/kWh)
1	RTC	3.76
2	PEAK	4.18
3	OFF PEAK	3.54

Source: Information submitted by trading licensees

Table-5: PRICE OF ELECTRICITY TRANSACTED IN DAY AHEAD MARKET THROUGH POWER EXCHANGES, AUGUST 2020			
Sr.No	ACP	Price in IEX (₹/kWh)	Price in PXIL (₹/kWh)
1	Minimum	0.68	2.00
2	Maximum	4.93	4.18
3	Weighted Average	2.53	2.79

Source: Information submitted by IEX and PXIL

Table-6: PRICE OF ELECTRICITY TRANSACTED IN REAL TIME MARKET THROUGH POWER EXCHANGES, AUGUST 2020			
Sr.No	ACP	Price in IEX (₹/kWh)	Price in PXIL (₹/kWh)
1	Minimum	0.10	-
2	Maximum	5.21	-
3	Weighted Average	2.36	-

Source: Information submitted by IEX and PXIL

Table-7: VOLUME AND PRICE OF ELECTRICITY IN TERM AHEAD MARKET OF IEX, AUGUST 2020			
Sr.No	Term ahead contracts	Actual Scheduled Volume (MUs)	Weighted Average Price (₹/kWh)
1	Intra-Day Contracts	1.87	3.21
2	Day Ahead Contingency Contracts	1.62	3.22
3	Daily Contracts	117.04	2.76
	Total	120.52	2.77

Source: IEX

Table-8: VOLUME AND PRICE OF ELECTRICITY IN TERM AHEAD MARKET OF PXIL, AUGUST 2020			
Sr.No	Term ahead contracts	Actual Scheduled Volume (MUs)	Weighted Average Price (₹/kWh)
1	Intra-Day Contracts	18.77	3.30
2	Any Day(s) Contracts	302.45	2.49
	Total	321.22	2.54

Source: PXIL

Table-9: VOLUME AND PRICE OF ELECTRICITY IN GREEN TERM AHEAD MARKET OF IEX, AUGUST 2020			
Sr.No	Green Term ahead contracts	Actual Scheduled Volume (MUs)	Weighted Average Price (₹/kWh)
1	Intra-Day Contracts	0.002	3.00
2	Day Ahead Contingency Contracts	2.66	3.06
	Total	2.66	3.06

Source: IEX

Table-10: PRICE OF ELECTRICITY TRANSACTED THROUGH DSM, AUGUST 2020		
Sr.No	Item	Price in All India Grid (₹/kWh)
1	Minimum	0.00
2	Maximum	8.00
3	Average	2.83

Source: NLDC

Figure-6: Price of Short-term Transactions of Electricity, August 2020

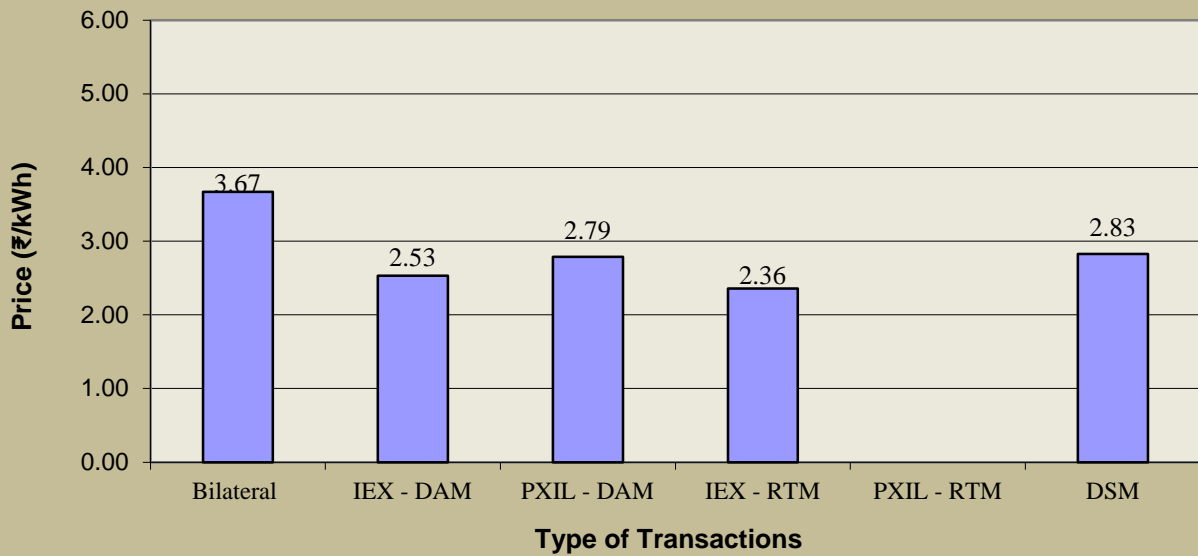
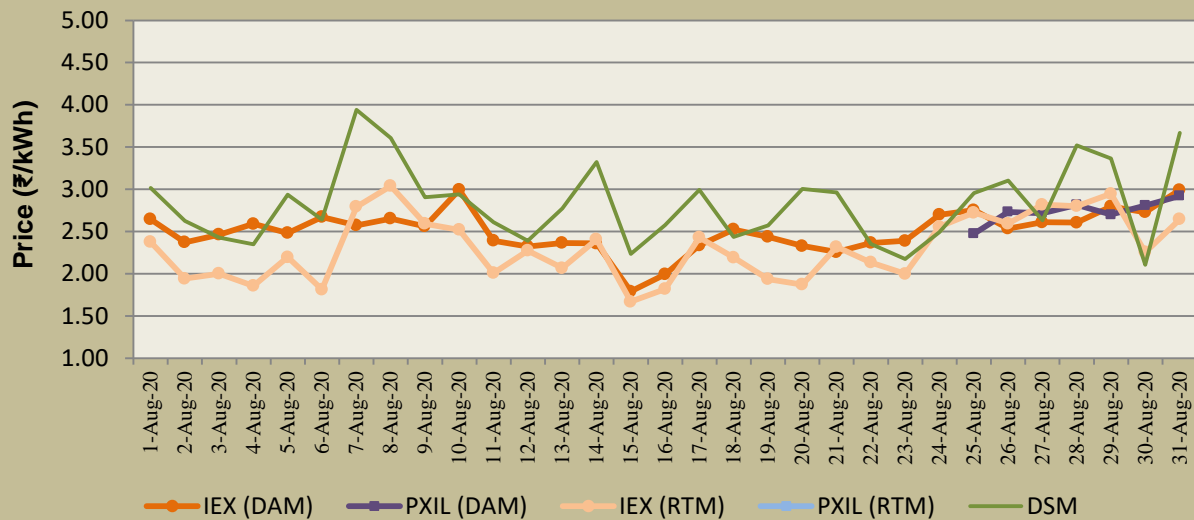


Figure-7: Price of Short-term Transactions of Electricity, August 2020 (Day-wise)



Note: In PXIL, no electricity was transacted in RTM. Electricity was transacted in DAM on PXIL only on 25th – 31st August 2020.

Table-11: VOLUME OF ELECTRICITY SOLD THROUGH BILATERAL, AUGUST 2020		
Name of the Entity	Volume of Sale (MUs)	% of Volume
HIMACHAL PRADESH	702.58	15.37
MP	617.59	13.51
TAMIL NADU	406.08	8.88
SEMBCORP	333.61	7.30
UTTARAKHAND	260.40	5.70
RKM POWER	224.62	4.91
DB POWER	206.91	4.53
ESSAR POWER	164.35	3.59
MAHARASHTRA	150.14	3.28
RPREL	145.52	3.18
ADHUNIK POWER LTD	139.11	3.04
GUJARAT	129.45	2.83
JITPL	124.65	2.73
KERALA	108.29	2.37
DAGACHU	89.72	1.96
RAJASTHAN	67.39	1.47
JAYPEE NIGRIE	62.59	1.37
ONGC PALATANA	56.59	1.24
J & K	48.86	1.07
GMR KAMALANGA	44.64	0.98
REGL	44.16	0.97
DVC	39.73	0.87
MEGHALAYA	39.58	0.87
EMCO	38.57	0.84
MANIPUR	37.71	0.82
ARUNACHAL PRADESH	36.00	0.79
KARNATAKA	34.60	0.76
SKS POWER	30.71	0.67
ANDHRA PRADESH	28.09	0.61
AD HYDRO	20.83	0.46
SIKKIM	18.60	0.41
ODISHA	18.52	0.41
DGEN MEGA POWER	16.56	0.36
BALCO	15.42	0.34
SAINJ HEP	12.80	0.28
CHHATTISGARH	11.90	0.26
LANKO_AMK	10.24	0.22
NAGALAND	9.26	0.20
MB POWER	7.94	0.17
TELANGANA	6.16	0.13
WEST BENGAL	4.05	0.09
TRN ENERGY	3.75	0.08
GOA	2.79	0.06
ACBIL	0.73	0.02
UTTAR PRADESH	0.34	0.01
NTPC STATIONS-NER	0.19	0.004
NTPC STATIONS-ER	0.02	0.0004
Total	4572.33	100.00
Volume Sold by top 5 Regional Entities	2320.26	50.75

Table-12: VOLUME OF ELECTRICITY PURCHASED THROUGH BILATERAL, AUGUST 2020

Name of the Entity	Volume of Purchase (MUs)	% of Volume
PUNJAB	1423.79	31.01
HARYANA	832.84	18.14
DELHI	581.90	12.67
UTTAR PRADESH	466.64	10.16
TELANGANA	234.38	5.10
WEST BENGAL	186.81	4.07
BANGLADESH	146.27	3.19
BIHAR	145.53	3.17
JHARKHAND	139.11	3.03
RAJASTHAN	98.88	2.15
MP	76.75	1.67
ASSAM	61.07	1.33
CHHATTISGARH	60.32	1.31
NEPAL(NVVN)	41.52	0.90
GOA	38.91	0.85
MAHARASHTRA	14.57	0.32
ODISHA	14.15	0.31
TAMIL NADU	12.23	0.27
ANDHRA PRADESH	6.45	0.14
AMPS Hazira	4.99	0.11
DADRA & NAGAR HAVELI	1.82	0.04
UTTARAKHAND	1.34	0.03
GUJARAT	0.72	0.02
ARUNACHAL PRADESH	0.16	0.003
KARNATAKA	0.03	0.001
TOTAL	4591.19	100.00
Volume Purchased by top 5 Regional Entities	3539.55	77.09

Table-13: VOLUME OF ELECTRICITY SOLD IN DAY AHEAD MARKET THROUGH POWER EXCHANGES, AUGUST 2020

Name of the Entity	Volume of Sale (MUs)	% of Volume
TEESTA STG3	673.63	14.97
HIMACHAL PRADESH	430.32	9.57
ODISHA	326.75	7.26
JAYPEE NIGRIE	214.59	4.77
J & K	210.97	4.69
SEMBCORP	198.83	4.42
GUJARAT	166.42	3.70
RPREL	153.47	3.41
KARNATAKA	121.05	2.69
UTTAR PRADESH	105.22	2.34
ESSAR POWER	103.17	2.29
AD HYDRO	103.13	2.29
KARCHAM WANGTOO	93.66	2.08
NEEPCO STATIONS	91.35	2.03
JINDAL POWER	86.34	1.92
CHUZACHEN HEP	84.96	1.89
JHARKHAND	83.98	1.87
DIKCHU HEP	76.27	1.70
GOA	69.37	1.54
SAINJ HEP	65.11	1.45
EMCO	61.91	1.38
JORETHANG	60.68	1.35
MB POWER	59.55	1.32
TASHIDENG HEP	58.68	1.30
DGEN MEGA POWER	53.43	1.19
CHHATTISGARH	53.20	1.18
ONGC PALATANA	52.48	1.17
SIKKIM	45.69	1.02
DB POWER	39.92	0.89
JINDAL STAGE-II	37.13	0.83
TELANGANA	33.00	0.73
CHANDIGARH	32.67	0.73
MARUTI COAL	31.60	0.70
JHABUA POWER_MP	31.11	0.69
MP	30.60	0.68
REGL	29.11	0.65
SPECTRUM	26.34	0.59
MAHARASHTRA	25.10	0.56
DELHI	25.08	0.56
ASSAM	23.24	0.52
JITPL	22.50	0.50
MEGHALAYA	18.62	0.41
ARUNACHAL PRADESH	18.58	0.41
NTPC STATIONS-WR	18.02	0.40
THERMAL POWERTECH	15.56	0.35
WEST BENGAL	13.48	0.30
GMR KAMALANGA	13.14	0.29
ACBIL	13.05	0.29

KERALA	11.63	0.26
BIHAR	10.82	0.24
RAJASTHAN	8.79	0.20
TAMIL NADU	8.60	0.19
BALCO	6.63	0.15
LANCO BUDHIL	6.52	0.15
MANIPUR	5.99	0.13
ANDHRA PRADESH	5.93	0.13
DVC	4.59	0.10
ADANI GREEN	4.52	0.10
NTPC STATIONS-ER	2.87	0.06
DADRA & NAGAR HAVELI	2.74	0.06
NTPC STATIONS-SR	2.52	0.06
SKS POWER	2.46	0.05
MIZORAM	2.17	0.05
HARYANA	2.14	0.05
IL&FS	1.45	0.03
PUNJAB	1.18	0.03
NJPC	1.16	0.03
NAGALAND	0.86	0.02
NTPC STATIONS-NER	0.71	0.02
NLC	0.68	0.02
RAMPUR HEP	0.58	0.01
ADHUNIK POWER LTD	0.45	0.01
NTPC STATIONS-NR	0.20	0.005
DHARIWAL POWER	0.20	0.004
Total	4498.46	100.00
Volume sold by top 5 Regional Entities	1856.27	41.26

Table-14: VOLUME OF ELECTRICITY PURCHASED IN DAY AHEAD MARKET THROUGH POWER EXCHANGES, AUGUST 2020		
Name of the Entity	Volume of Purchase (MUs)	% of Volume
HARYANA	737.81	16.40
MAHARASHTRA	608.14	13.52
GUJARAT	466.11	10.36
TELANGANA	446.35	9.92
TAMIL NADU	353.14	7.85
ANDHRA PRADESH	308.83	6.87
UTTAR PRADESH	266.98	5.93
UTTARAKHAND	221.16	4.92
DELHI	199.12	4.43
BIHAR	156.88	3.49
ASSAM	138.28	3.07
AMPS Hazira	116.39	2.59
PUNJAB	85.70	1.91
RAJASTHAN	77.99	1.73
KARNATAKA	77.88	1.73
ODISHA	51.80	1.15
KERALA	41.30	0.92
DADRA & NAGAR HAVELI	33.84	0.75
WEST BENGAL	29.01	0.64
MP	26.84	0.60
HIMACHAL PRADESH	21.96	0.49
CHHATTISGARH	12.46	0.28
MANIPUR	11.15	0.25
MEGHALAYA	4.80	0.11
DAMAN AND DIU	1.86	0.04
JHARKHAND	0.82	0.02
NAGALAND	0.65	0.01
CHANDIGARH	0.55	0.01
ARUNACHAL PRADESH	0.35	0.01
DVC	0.30	0.01
GOA	0.02	0.0004
TOTAL	4498.46	100.00
Volume purchased by top 5 Regional Entities	2611.55	58.05

Table-15: VOLUME OF ELECTRICITY SOLD IN REAL TIME MARKET THROUGH POWER EXCHANGES, AUGUST 2020

Name of the Entity	Volume of Sale (MUs)	% of Volume
J & K	154.22	17.92
KARNATAKA	148.75	17.28
NLC	78.42	9.11
MP	50.88	5.91
ODISHA	47.73	5.55
UTTAR PRADESH	43.44	5.05
SEMBCORP	30.34	3.53
GUJARAT	25.21	2.93
CHHATTISGARH	24.41	2.84
DELHI	17.93	2.08
WEST BENGAL	16.07	1.87
TELANGANA	15.49	1.80
KORBA WEST POWER	14.03	1.63
RAJASTHAN	13.60	1.58
MAHARASHTRA	12.58	1.46
NTPC STATIONS-WR	11.55	1.34
RPREL	11.26	1.31
SASAN UMPP	10.53	1.22
BIHAR	10.00	1.16
JHABUA POWER_MP	9.26	1.08
SIKKIM	9.04	1.05
THERMAL POWERTECH	8.85	1.03
JHARKHAND	7.72	0.90
NTPC STATIONS-SR	7.12	0.83
AD HYDRO	6.97	0.81
HIMACHAL PRADESH	6.12	0.71
JORETHANG	5.41	0.63
TEESTA STG3	5.12	0.60
TASHIDENG HEP	4.82	0.56
ASSAM	4.65	0.54
DGEN MEGA POWER	4.41	0.51
JINDAL STAGE-II	4.07	0.47
REGL	4.06	0.47
NEEPCO STATIONS	4.05	0.47
TRN ENERGY	3.45	0.40
KERALA	3.36	0.39
DB POWER	2.89	0.34
ESSAR POWER	2.49	0.29
ONGC PALATANA	2.47	0.29
MARUTI COAL	1.85	0.22
RGPPL (DABHOL)	1.82	0.21
JINDAL POWER	1.76	0.20
GMR KAMALANGA	1.48	0.17
NSPCL	1.41	0.16
BALCO	1.38	0.16
MEGHALAYA	1.27	0.15
NTPC STATIONS-ER	1.26	0.15
TRIPURA	1.19	0.14

CHANDIGARH	0.79	0.09
NTPC STATIONS-NER	0.61	0.07
MB POWER	0.55	0.06
NTPC STATIONS-NR	0.43	0.05
JITPL	0.38	0.04
CHUZACHEN HEP	0.37	0.04
ACBIL	0.29	0.03
HARYANA	0.28	0.03
IL&FS	0.27	0.03
SPECTRUM	0.19	0.02
ANDHRA PRADESH	0.07	0.01
TAMIL NADU	0.05	0.01
DHARIWAL POWER	0.03	0.004
MAITHON POWER LTD	0.03	0.003
DVC	0.02	0.002
NAGALAND	0.001	0.0001
Total	860.57	100.00
Volume sold by top 5 Regional Entities	480.00	55.78

Table-16: VOLUME OF ELECTRICITY PURCHASED IN REAL TIME MARKET THROUGH POWER EXCHANGES, AUGUST 2020		
Name of the Entity	Volume of Purchase (MUs)	% of Volume
TELANGANA	220.12	25.58
WEST BENGAL	113.02	13.13
HARYANA	108.94	12.66
RAJASTHAN	76.49	8.89
MAHARASHTRA	57.89	6.73
ANDHRA PRADESH	56.27	6.54
DELHI	53.50	6.22
UTTAR PRADESH	32.46	3.77
ASSAM	26.29	3.06
BIHAR	24.01	2.79
GUJARAT	16.49	1.92
ODISHA	8.55	0.99
TAMIL NADU	7.93	0.92
KERALA	7.25	0.84
KARNATAKA	6.94	0.81
CHHATTISGARH	5.33	0.62
JORETHANG	4.99	0.58
PUNJAB	4.47	0.52
TASHIDENG HEP	4.22	0.49
MEGHALAYA	4.14	0.48
DADRA & NAGAR HAVELI	4.06	0.47
HIMACHAL PRADESH	4.03	0.47
NAGALAND	2.99	0.35
TRIPURA	2.43	0.28
RPREL	2.41	0.28
UTTARAKHAND	1.99	0.23
MANIPUR	1.06	0.12
JHARKHAND	0.68	0.08
MP	0.66	0.08
AMPS Hazira	0.34	0.04
DVC	0.21	0.02
CHUZACHEN HEP	0.17	0.02
GOA	0.13	0.01
SIKKIM	0.11	0.01
AD HYDRO	0.02	0.003
TOTAL	860.57	100.00
Volume purchased by top 5 Regional Entities	576.47	66.99

Table-17: VOLUME OF ELECTRICITY UNDER DRAWAL (EXPORTED) THROUGH DSM, AUGUST 2020		
Name of the Entity	Volume of Under drawal (MUs)	% of Volume
NTPC STATIONS-WR	124.01	5.63
RAJASTHAN	122.10	5.55
TAMIL NADU	107.12	4.87
MP	106.25	4.83
MAHARASHTRA	92.97	4.22
KARNATAKA	89.39	4.06
UTTAR PRADESH	83.40	3.79
GUJARAT	79.37	3.61
NHPC STATIONS	78.13	3.55
TELANGANA	76.28	3.47
KURICHU HEP	64.89	2.95
CHUKHA HEP	61.43	2.79
BIHAR	55.27	2.51
J & K	53.99	2.45
SASAN UMPP	50.02	2.27
DELHI	48.99	2.23
NTPC STATIONS-NR	46.73	2.12
ODISHA	43.26	1.97
ANDHRA PRADESH	43.09	1.96
HARYANA	29.97	1.36
PUNJAB	28.29	1.29
CHHATTISGARH	26.93	1.22
NTPC STATIONS-SR	25.16	1.14
JHARKHAND	22.99	1.04
NTPC STATIONS-ER	21.79	0.99
GIWEL_BHUJ	21.53	0.98
AMPS Hazira	21.34	0.97
NLC	19.50	0.89
DVC	17.57	0.80
UTTARAKHAND	15.86	0.72
JINDAL STAGE-II	15.55	0.71
KARCHAM WANGTOO	15.36	0.70
BBMB	14.00	0.64
WEST BENGAL	11.97	0.54
MEGHALAYA	11.49	0.52
KERALA	11.27	0.51
OSTRO	9.92	0.45
NEEPCO STATIONS	9.41	0.43
HIMACHAL PRADESH	9.09	0.41
RPREL	8.82	0.40
TRIPURA	8.74	0.40
JINDAL POWER	8.64	0.39
ASSAM	8.59	0.39
RENEW_BHACHAU	8.30	0.38
INOX_BHUJ	8.24	0.37
MAHINDRA_RUMS	7.94	0.36
ORANGE_TCN	7.90	0.36
MANGDECHU HEP	7.77	0.35
AGEMPL BHUJ	7.70	0.35
GIWEL_TCN	7.70	0.35
PONDICHERRY	7.62	0.35
MB POWER	7.26	0.33
MAITHON POWER LTD	7.22	0.33
ADHUNIK POWER LTD	7.16	0.33
TEESTA HEP	7.03	0.32
JAYPEE NIGRIE	6.88	0.31
TATA_PVGD	6.85	0.31

GOA	6.84	0.31
FORTUM2_PVGD	6.53	0.30
CLEAN_SLR	6.49	0.29
NJPC	6.10	0.28
ALFANAR_BHUJ	6.10	0.28
EMCO	6.03	0.27
ARINSUM_RUMS	5.95	0.27
ACME_RUMS	5.88	0.27
CGPL	5.69	0.26
RENEW_SLR_BKN	5.24	0.24
SBG_NPK	5.02	0.23
CHANDIGARH	4.85	0.22
TEESTA STG3	4.66	0.21
BETAM_TCN	4.64	0.21
RAP C	4.64	0.21
ESSAR POWER	4.57	0.21
SB_SLR	4.55	0.21
TEHRI	4.48	0.20
SEMBCORP	4.45	0.20
DADRA & NAGAR HAVELI	4.40	0.20
ARERJL_SLR	4.34	0.20
ACBIL	4.20	0.19
AZURE_SLR	4.16	0.19
SIKKIM	3.78	0.17
TATA_SLR	3.73	0.17
SBG_PVGD	3.72	0.17
AD HYDRO	3.70	0.17
RANGANADI HEP	3.64	0.17
BARC	3.63	0.17
PARAM_PVGD	3.61	0.16
AZURE_PVGD	3.59	0.16
LANKO_AMK	3.58	0.16
MYTRAH_TCN	3.52	0.16
ACME_SLR	3.49	0.16
AVAADA2_PVGD	3.18	0.14
MIZORAM	3.17	0.14
DB POWER	3.15	0.14
AVAADA1_PVGD	3.12	0.14
AZURE34_SLR	2.96	0.13
ARUNACHAL PRADESH	2.85	0.13
NSPCL	2.76	0.13
KSK MAHANADI	2.75	0.12
RKM POWER	2.73	0.12
BANGLADESH	2.53	0.11
KOTESHWAR	2.50	0.11
NAGALAND	2.42	0.11
TRN ENERGY	2.36	0.11
MANIPUR	2.35	0.11
NTPC_ANTP	2.29	0.10
THERMAL POWERTECH	2.29	0.10
NPGC	2.28	0.10
BRBCL,NABINAGAR	2.26	0.10
DIKCHU HEP	2.25	0.10
RAIL	2.24	0.10
FORTUM1_PVGD	2.08	0.09
ADY13_PVGD	2.02	0.09
NAPP	1.92	0.09
GMR KAMALANGA	1.92	0.09
DHARIWAL POWER	1.92	0.09
NEPAL(NVVN)	1.89	0.09
TASHIDENG HEP	1.82	0.08

RAMPUR HEP	1.81	0.08
KSMPL_SLR	1.77	0.08
SKS POWER	1.74	0.08
JHABUA POWER_MP	1.64	0.07
ADY1_PVGD	1.57	0.07
ARS_PVGD	1.54	0.07
TATA_ANTP	1.49	0.07
REGL	1.47	0.07
HVDC CHAMPA	1.45	0.07
NTPC STATIONS-NER	1.44	0.07
NTPL	1.44	0.07
ADY2_PVGD	1.41	0.06
ADY10_PVGD	1.33	0.06
AZURE_ANTP	1.32	0.06
RAP B	1.30	0.06
ONGC PALATANA	1.24	0.06
YARROW_PVGD	1.23	0.06
DAMAN AND DIU	1.23	0.06
FRV_NPK	1.18	0.05
FRV_ANTP	1.17	0.05
DGEN MEGA POWER	1.17	0.05
ADY6_PVGD	1.16	0.05
JITPL	1.16	0.05
ADY3_PVGD	1.15	0.05
RENEW_PVGD	1.08	0.05
COASTGEN	1.04	0.05
ABSP_ANTP	1.00	0.05
AHSP_ANTP	0.97	0.04
AKSP_ANTP	0.93	0.04
RENEW_SLR	0.91	0.04
AKS_PVGD	0.91	0.04
RANGIT HEP	0.90	0.04
ADANI GREEN	0.83	0.04
IL&FS	0.71	0.03
PARE HEP	0.68	0.03
SAINJ HEP	0.66	0.03
BHADRAVATHI HVDC	0.63	0.03
CHUZACHEN HEP	0.62	0.03
IGSTPS	0.54	0.02
BALCO	0.45	0.02
JORETHANG	0.40	0.02
MTPS II	0.37	0.02
LOKTAK	0.36	0.02
SHREE CEMENT	0.32	0.01
NETCL VALLUR	0.24	0.01
DOYANG HEP	0.23	0.01
NFF	0.18	0.01
VINDHYACHAL HVDC	0.16	0.01
KREDL_PVGD	0.14	0.01
HVDC ALPD	0.07	0.00
RGPPL (DABHOL)	0.07	0.003
LANCO BUDHIL	0.06	0.003
HVDC RAIGARH	0.05	0.002
HVDC PUS	0.03	0.001
DCPP	0.02	0.001
DAGACHU	0.002	0.0001
Total	2200.77	100.00
Volume Exported by top 5 Regional Entities	552.45	25.10

Table-18: VOLUME OF ELECTRICITY OVER DRAWAL (IMPORTED) THROUGH DSM, AUGUST 2020		
Name of the Entity	Volume of Over drawal (MUs)	% of Volume
TALA HEP	147.92	7.66
HARYANA	84.73	4.39
UTTAR PRADESH	81.81	4.24
WEST BENGAL	78.26	4.06
BIHAR	71.11	3.68
NTPC STATIONS-ER	70.81	3.67
GUJARAT	69.18	3.58
RAJASTHAN	68.09	3.53
ANDHRA PRADESH	60.90	3.16
NTPC STATIONS-WR	54.57	2.83
TELANGANA	47.95	2.48
NTPC STATIONS-NR	41.25	2.14
PUNJAB	41.25	2.14
TAMIL NADU	39.56	2.05
MAHARASHTRA	39.09	2.03
CGPL	37.27	1.93
NTPC STATIONS-SR	37.11	1.92
KARNATAKA	35.10	1.82
UTTARAKHAND	31.51	1.63
DVC	29.06	1.51
J & K	28.65	1.48
MP	27.25	1.41
HIMACHAL PRADESH	25.55	1.32
NLC	23.73	1.23
ASSAM	23.67	1.23
CHHATTISGARH	23.43	1.21
AMPS Hazira	22.03	1.14
BALCO	20.19	1.05
RGPPL (DABHOL)	19.61	1.02
RPREL	19.37	1.00
KERALA	19.06	0.99
ODISHA	17.26	0.89
NHPC STATIONS	15.26	0.79
JHARKHAND	13.89	0.72
NEPAL(NVVN)	13.72	0.71
EMCO	13.51	0.70
NETCL VALLUR	11.98	0.62
GIWEL_BHUJ	11.83	0.61
GIWEL_TCN	10.35	0.54
DELHI	10.32	0.53
MYTRAH_TCN	9.86	0.51
ESSAR POWER	9.76	0.51
JHABUA POWER_MP	8.54	0.44
CHANDIGARH	7.68	0.40
RENEW_BHACHAU	7.53	0.39
THERMAL POWERTECH	7.48	0.39
MANGDECHU HEP	7.33	0.38
CLEAN_SLR	7.26	0.38
DAMAN AND DIU	7.14	0.37
AD HYDRO	7.13	0.37
ARUNACHAL PRADESH	7.12	0.37
KAPP 3&4	6.91	0.36
TATA_PVGD	6.65	0.34
MAHINDRA_RUMS	6.51	0.34
OSTRO	6.50	0.34
IGSTPS	6.30	0.33
TEESTA STG3	6.25	0.32

ORANGE_TCN	6.22	0.32
BANGLADESH	6.07	0.31
AGEMPL BHUJ	5.95	0.31
TRIPURA	5.89	0.31
KARCHAM WANGTOO	5.69	0.29
ACME_RUMS	5.55	0.29
GOA	5.48	0.28
ARINSUM_RUMS	5.46	0.28
GMR KAMALANGA	5.45	0.28
DAGACHU	5.36	0.28
DB POWER	5.14	0.27
DADRA & NAGAR HAVELI	5.08	0.26
NTPC_ANTP	4.95	0.26
FORTUM2_PVGD	4.84	0.25
COASTGEN	4.76	0.25
INOX_BHUJ	4.58	0.24
RENEW_SLR_BKN	4.57	0.24
JORETHANG	4.52	0.23
SBG_PVGD	4.45	0.23
BRBCL,NABINAGAR	4.38	0.23
SBG_NPK	4.29	0.22
SEMBCORP	4.26	0.22
MB POWER	4.22	0.22
ACME_SLR	4.15	0.21
REGL	4.12	0.21
TASHIDENG HEP	4.12	0.21
MAITHON POWER LTD	4.10	0.21
NPGC	4.05	0.21
BBMB	3.92	0.20
ARERJL_SLR	3.65	0.19
SB_SLR	3.65	0.19
RAIL	3.61	0.19
NTPL	3.50	0.18
NAPP	3.50	0.18
PONDICHERRY	3.44	0.18
AVAADA2_PVGD	3.38	0.18
KREDL_PVGD	3.28	0.17
AZURE_SLR	3.28	0.17
RAP C	3.24	0.17
KSK MAHANADI	3.18	0.16
AVAADA1_PVGD	3.15	0.16
TATA_SLR	2.94	0.15
MANIPUR	2.93	0.15
AZURE34_SLR	2.76	0.14
IL&FS	2.72	0.14
NTPC STATIONS-NER	2.62	0.14
DGEN MEGA POWER	2.13	0.11
BETAM_TCN	2.06	0.11
JITPL	2.06	0.11
PARAM_PVGD	2.06	0.11
ACBIL	1.99	0.10
TATA_ANTP	1.97	0.10
TEHRI	1.96	0.10
AZURE_PVGD	1.88	0.10
MIZORAM	1.77	0.09
JINDAL STAGE-II	1.75	0.09
RKM POWER	1.71	0.09
MTPS II	1.52	0.08
ADHUNIK POWER LTD	1.51	0.08
FORTUM1_PVGD	1.50	0.08
KOTESHWAR	1.45	0.07

LANCO BUDHIL	1.44	0.07
NSPCL	1.43	0.07
CHUZACHEN HEP	1.41	0.07
SKS POWER	1.35	0.07
RENEW_PVGD	1.34	0.07
SIKKIM	1.31	0.07
RENEW_SLR	1.27	0.07
NJPC	1.27	0.07
ONGC PALATANA	1.26	0.07
SAINJ HEP	1.26	0.07
MEGHALAYA	1.22	0.06
ADY2_PVGD	1.08	0.06
AKS_PVGD	1.08	0.06
ADY10_PVGD	1.05	0.05
NAGALAND	1.04	0.05
ADY1_PVGD	1.02	0.05
NEEPCO STATIONS	0.98	0.05
SASAN UMPP	0.97	0.05
ARS_PVGD	0.95	0.05
ADY3_PVGD	0.95	0.05
AHSP_ANTP	0.94	0.05
ADY6_PVGD	0.93	0.05
AKSP_ANTP	0.92	0.05
ABSP_ANTP	0.91	0.05
JINDAL POWER	0.90	0.05
FRV_NPK	0.89	0.05
ADY13_PVGD	0.89	0.05
FRV_ANTP	0.85	0.04
KSMPL_SLR	0.85	0.04
YARROW_PVGD	0.84	0.04
DIKCHU HEP	0.79	0.04
RANGIT HEP	0.70	0.04
LANKO_AMK	0.70	0.04
NEP	0.67	0.03
PARE HEP	0.62	0.03
JAYPEE NIGRIE	0.59	0.03
AZURE_ANTP	0.55	0.03
MEENAKSHI	0.55	0.03
RANGANADI HEP	0.54	0.03
LANKO KONDAPALLI	0.52	0.03
TRN ENERGY	0.51	0.03
DHARIWAL POWER	0.51	0.03
RAP B	0.49	0.03
ADANI GREEN	0.48	0.02
SIMHAPURI	0.36	0.02
SHREE CEMENT	0.34	0.02
RAMPUR HEP	0.23	0.01
NFF	0.22	0.01
TEESTA HEP	0.20	0.01
LOKTAK	0.19	0.01
HVDC PUS	0.19	0.01
DOYANG HEP	0.11	0.01
HVDC ALPD	0.08	0.004
HVDC RAIGARH	0.04	0.002
CHUKHA HEP	0.04	0.002
KURICHU HEP	0.03	0.002
DCPP	0.01	0.001
HVDC CHAMPA	0.01	0.001
BHADRAVATHI HVDC	0.01	0.0005
TOTAL	1929.78	100.00
Volume Imported by top 5 Regional Entities	463.83	24.04

Table-19: TOTAL VOLUME OF NET SHORT-TERM TRANSACTIONS OF ELECTRICITY (REGIONAL ENTITY-WISE), AUGUST 2020		
S. No.	Name of the Entity	Total volume of net short-term transactions of electricity*
1	HARYANA	1731.94
2	PUNJAB	1525.74
3	TELANGANA	817.86
4	DELHI	752.84
5	UTTAR PRADESH	615.49
6	MAHARASHTRA	438.90
7	WEST BENGAL	361.54
8	ANDHRA PRADESH	355.26
9	BIHAR	321.43
10	ASSAM	212.82
11	GUJARAT	152.06
12	BANGLADESH	149.81
13	TALA HEP	147.92
14	AMPS Hazira	122.41
15	RAJASTHAN	109.58
16	NEPAL(NVVN)	53.35
17	NTPC STATIONS-ER	44.86
18	JHARKHAND	39.82
19	DADRA & NAGAR HAVELI	37.66
20	CGPL	31.58
21	RGPPL (DABHOL)	17.72
22	NETCL VALLUR	11.74
23	DAMAN AND DIU	7.77
24	KAPP 3&4	6.91
25	MYTRAH_TCN	6.34
26	IGSTPS	5.76
27	COASTGEN	3.72
28	KREDL_PVGD	3.14
29	NTPC_ANTP	2.66
30	GIWEL_TCN	2.65
31	NTPC STATIONS-SR	2.31
32	BRBCL,NABINAGAR	2.12
33	NTPL	2.07
34	NPGC	1.77
35	NAPP	1.58
36	RAIL	1.37
37	MTPS II	1.15
38	CLEAN_SLR	0.77
39	SBG_PVGD	0.73
40	NEP	0.67
41	ACME_SLR	0.66
42	MEENAKSHI	0.55
43	LANKO KONDAPALLI	0.52
44	TATA_ANTP	0.48
45	KSK MAHANADI	0.43
46	SIMHAPURI	0.36
47	RENEW_SLR	0.36
48	IL&FS	0.28
49	RENEW_PVGD	0.26
50	AVAADA2_PVGD	0.20
51	AKS_PVGD	0.17
52	HVDC PUS	0.15
53	NFF	0.05
54	AVAADA1_PVGD	0.03
55	SHREE CEMENT	0.02
56	HVDC ALPD	0.01
57	DCPP	-0.003
58	HVDC RAIGARH	-0.01
59	AKSP_ANTP	-0.01
60	AHSP_ANTP	-0.03

61	PARE HEP	-0.06
62	ABSP_ANTP	-0.09
63	DOYANG HEP	-0.12
64	VINDHYACHAL HVDC	-0.16
65	LOKTAK	-0.17
66	RANGIT HEP	-0.19
67	AZURE34_SLR	-0.20
68	ADY3_PVGD	-0.20
69	TATA_PVGD	-0.20
70	ADY6_PVGD	-0.24
71	ADY10_PVGD	-0.28
72	FRV_NPK	-0.29
73	FRV_ANTP	-0.32
74	NTPC STATIONS-NER	-0.33
75	ADY2_PVGD	-0.33
76	ACME_RUMS	-0.33
77	YARROW_PVGD	-0.39
78	MANGDECHU HEP	-0.44
79	ARINSUM_RUMS	-0.49
80	ADY1_PVGD	-0.55
81	FORTUM1_PVGD	-0.58
82	ARS_PVGD	-0.59
83	BHADRAVATHI HVDC	-0.62
84	RENEW_SLR_BKN	-0.67
85	ARERJL_SLR	-0.68
86	SBG_NPK	-0.73
87	AZURE_ANTP	-0.77
88	RENEW_BHACHAU	-0.77
89	TATA_SLR	-0.79
90	RAP B	-0.81
91	AZURE_SLR	-0.89
92	SB_SLR	-0.90
93	KSMPL_SLR	-0.92
94	KOTESHWAR	-1.05
95	ADY13_PVGD	-1.13
96	RAP C	-1.40
97	MAHINDRA_RUMS	-1.43
98	HVDC CHAMPA	-1.44
99	PARAM_PVGD	-1.55
100	TRIPURA	-1.61
101	DHARIWAL POWER	-1.65
102	ORANGE_TCN	-1.69
103	FORTUM2_PVGD	-1.69
104	AZURE_PVGD	-1.72
105	AGEMPL BHUJ	-1.75
106	RAMPUR HEP	-2.16
107	TEHRI	-2.52
108	BETAM_TCN	-2.58
109	NSPCL	-2.73
110	RANGANADI HEP	-3.10
111	MAITHON POWER LTD	-3.15
112	OSTRO	-3.42
113	MIZORAM	-3.57
114	BARC	-3.63
115	INOX_BHUJ	-3.66
116	BALCO	-3.69
117	PONDICHERRY	-4.18
118	ADANI GREEN	-4.87
119	LANCO BUDHIL	-5.15
120	NJPC	-6.00
121	ALFANAR_BHUJ	-6.10
122	NTPC STATIONS-NR	-6.11
123	TEESTA HEP	-6.83
124	NAGALAND	-7.86

125	TRN ENERGY	-9.04
126	GIWEL_BHUI	-9.71
127	BBMB	-10.08
128	LANKO_AMK	-13.11
129	KORBA WEST POWER	-14.03
130	CHHATTISGARH	-14.91
131	ACBIL	-16.28
132	THERMAL POWERTECH	-19.21
133	UTTARAKHAND	-20.26
134	SPECTRUM	-26.53
135	CHANDIGARH	-30.08
136	MANIPUR	-30.92
137	DVC	-32.34
138	MARUTI COAL	-33.46
139	JHABUA POWER_MP	-33.47
140	SKS POWER	-33.55
141	GOA	-34.46
142	ARUNACHAL PRADESH	-49.80
143	JINDAL STAGE-II	-55.00
144	GMR KAMALANGA	-55.74
145	JORETHANG	-56.98
146	TASHIDENG HEP	-56.99
147	SASAN UMPP	-59.58
148	MEGHALAYA	-60.79
149	CHUKHA HEP	-61.39
150	NHPC STATIONS	-62.87
151	KURICHU HEP	-64.85
152	KERALA	-66.94
153	MB POWER	-71.09
154	DGEN MEGA POWER	-73.43
155	REGL	-74.67
156	NLC	-74.88
157	SIKKIM	-75.69
158	SAINJ HEP	-77.31
159	DIKCHU HEP	-77.72
160	DAGACHU	-84.36
161	CHUZACHEN HEP	-84.38
162	EMCO	-92.99
163	JINDAL POWER	-95.84
164	NTPC STATIONS-WR	-99.02
165	KARCHAM WANGTOO	-103.33
166	NEEPCO STATIONS	-103.83
167	TAMIL NADU	-108.99
168	ONGC PALATANA	-111.52
169	AD HYDRO	-127.48
170	ADHUNIK POWER LTD	-145.21
171	JITPL	-146.62
172	RKM POWER	-225.63
173	DB POWER	-247.74
174	ESSAR POWER	-264.81
175	KARNATAKA	-273.84
176	JAYPEE NIGRIE	-283.48
177	RPREL	-297.29
178	ODISHA	-344.52
179	J & K	-439.39
180	SEMBCORP	-562.97
181	MP	-673.83
182	TEESTA STG3	-677.16
183	HIMACHAL PRADESH	-1096.57
* Total volume of net short-term transactions of electricity includes net of transactions of electricity through bilateral, power exchange and UI		
(-) indicates sale and (+) indicates purchase		

Table-20: DETAILS OF CONGESTION IN POWER EXCHANGES, AUGUST 2020					
	Details of Congestion	Day Ahead Market		Real Time Market	
		IEX	PXIL	IEX	PXIL
A	Unconstrained Cleared Volume (MUs)	4484.36	14.10	860.57	0.00
B	Actual Cleared Volume and hence scheduled (MUs)	4484.36	14.10	860.57	0.00
C	Volume of electricity that could not be cleared and hence not scheduled because of congestion (MUs) *	0.00	0.00	0.00	0.00
D	Volume of electricity that could not be cleared and hence not scheduled because of reasons other than congestion (MUs)	0.00	0.00	0.00	0.00
E	Volume of electricity that could not be cleared as % to Unconstrained Cleared Volume	0.00%	0.00%	0.00%	0.00%
F	Percentage of the time congestion occurred during the month (Number of hours congestion occurred/Total number of hours in the month)	0.00%	0.00%	0.00%	0.00%
G	Congestion occurrence (%) time block wise				
	0.00 - 6.00 hours	0.00%	0.00%	0.00%	0.00%
	6.00 - 12.00 hours	0.00%	0.00%	0.00%	0.00%
	12.00 - 18.00 hours	0.00%	0.00%	0.00%	0.00%
	18.00 - 24.00 hours	0.00%	0.00%	0.00%	0.00%
<i>*This power would have been scheduled had there been no congestion.</i>					
<i>Source: IEX, PXIL& NLDC</i>					

Table-21: VOLUME OF SHORT-TERM TRANSACTIONS OF ELECTRICITY IN INDIA (DAY-WISE) (MUs), AUGUST 2020

Date	Bilateral		Day Ahead Market [#]		Real Time Market [#]		Deviation Settlement (Over Drawl + Under Generation)	Total Electricity Generation (MU) as given at CEA Website*
	Through Traders and PXs**	Direct	IEX	PXIL	IEX	PXIL		
1-Aug-20	91.77	46.68	171.65	0.00	16.59	0.00	62.25	3569.03
2-Aug-20	97.54	47.77	133.11	0.00	15.47	0.00	62.27	3447.66
3-Aug-20	98.71	48.87	123.61	0.00	24.63	0.00	68.56	3393.54
4-Aug-20	104.82	49.31	148.00	0.00	32.64	0.00	67.93	3425.90
5-Aug-20	102.76	50.46	154.16	0.00	53.09	0.00	73.81	3412.66
6-Aug-20	107.97	49.44	178.42	0.00	40.69	0.00	71.35	3314.28
7-Aug-20	99.97	48.62	164.85	0.00	29.42	0.00	64.57	3458.83
8-Aug-20	99.95	49.47	160.71	0.00	33.70	0.00	64.06	3524.63
9-Aug-20	87.09	49.80	165.69	0.00	32.67	0.00	65.03	3447.55
10-Aug-20	101.09	48.49	187.85	0.00	20.08	0.00	62.92	3463.11
11-Aug-20	100.42	48.24	127.01	0.00	25.10	0.00	64.35	3403.42
12-Aug-20	99.94	48.69	123.30	0.00	27.24	0.00	69.20	3231.37
13-Aug-20	100.81	49.24	132.07	0.00	22.09	0.00	65.17	3168.62
14-Aug-20	101.81	48.80	122.62	0.00	19.81	0.00	61.95	3223.24
15-Aug-20	81.79	48.80	103.09	0.00	18.02	0.00	65.62	3130.02
16-Aug-20	85.29	48.98	121.14	0.00	18.59	0.00	65.04	3114.45
17-Aug-20	102.58	49.62	135.02	0.00	25.09	0.00	66.00	3377.44
18-Aug-20	104.21	49.61	151.73	0.00	23.36	0.00	65.76	3355.59
19-Aug-20	105.87	49.63	145.27	0.00	20.25	0.00	65.37	3214.83
20-Aug-20	103.55	49.79	131.85	0.00	16.56	0.00	66.12	3137.94
21-Aug-20	102.73	49.79	130.24	0.00	29.02	0.00	66.16	3173.50
22-Aug-20	100.96	49.73	131.03	0.00	18.16	0.00	68.02	3153.86
23-Aug-20	87.06	49.77	119.19	0.00	27.01	0.00	66.54	3058.87
24-Aug-20	103.48	49.77	137.42	0.00	23.08	0.00	65.34	3264.64
25-Aug-20	101.86	50.04	157.33	0.87	25.89	0.00	64.47	3404.42
26-Aug-20	101.69	49.32	147.25	1.07	39.18	0.00	68.20	3493.27
27-Aug-20	103.72	49.51	162.15	1.38	37.73	0.00	70.49	3623.50
28-Aug-20	98.41	49.46	149.10	1.84	40.60	0.00	68.94	3435.04
29-Aug-20	97.24	49.72	147.71	2.11	46.15	0.00	66.52	3379.28
30-Aug-20	84.99	49.76	154.54	3.00	36.86	0.00	73.23	3218.09
31-Aug-20	103.63	50.31	167.23	3.83	21.81	0.00	70.04	3392.78
Total	3063.71	1527.48	4484.36	14.10	860.57	0.00	2065.28	103411.36
Source: NLDC								
* Gross Electricity Generation excluding electricity generation from renewables and captive power plants.								
** The volume of bilateral through PXs represents the volume through term-ahead contracts.								
# Scheduled volume of all the bid areas.								

Table-22: PRICE OF SHORT-TERM TRANSACTIONS OF ELECTRICITY (DAY-WISE)(₹/kWh), AUGUST 2020									
Market Segment	Day ahead market of IEX			Day ahead market of PXIL			Under Drawl/Over Drawl from the Grid (DSM)		
Date	Minimum ACP	Maximum ACP	Weighted Average Price*	Minimum ACP	Maximum ACP	Weighted Average Price*	All India Grid		
							Minimum Price	Maximum Price	Average Price**
1-Aug-20	2.00	3.70	2.65	--	--	--	0.00	7.33	3.02
2-Aug-20	1.20	3.50	2.37	--	--	--	0.00	8.00	2.63
3-Aug-20	1.05	3.50	2.46	--	--	--	0.00	6.25	2.43
4-Aug-20	1.50	3.45	2.59	--	--	--	0.00	6.63	2.35
5-Aug-20	1.79	3.40	2.48	--	--	--	0.00	8.00	2.94
6-Aug-20	2.25	3.62	2.67	--	--	--	0.00	6.66	2.64
7-Aug-20	2.00	3.75	2.57	--	--	--	0.00	8.00	3.94
8-Aug-20	2.00	4.00	2.65	--	--	--	0.52	8.00	3.61
9-Aug-20	1.00	3.67	2.56	--	--	--	0.00	8.00	2.91
10-Aug-20	2.30	4.40	3.00	--	--	--	0.00	6.75	2.94
11-Aug-20	1.51	4.14	2.39	--	--	--	0.00	8.00	2.61
12-Aug-20	1.10	3.85	2.32	--	--	--	0.00	6.92	2.39
13-Aug-20	1.00	3.90	2.36	--	--	--	0.00	8.00	2.77
14-Aug-20	1.00	3.30	2.36	--	--	--	0.00	8.00	3.32
15-Aug-20	0.68	2.99	1.79	--	--	--	0.00	6.01	2.24
16-Aug-20	0.74	3.02	1.99	--	--	--	0.00	6.47	2.58
17-Aug-20	0.96	3.28	2.34	--	--	--	0.00	8.00	2.99
18-Aug-20	1.00	3.80	2.53	--	--	--	0.00	8.00	2.44
19-Aug-20	1.80	3.35	2.44	--	--	--	0.00	7.65	2.57
20-Aug-20	1.00	3.35	2.33	--	--	--	0.00	8.00	3.01
21-Aug-20	0.91	3.46	2.26	--	--	--	0.00	8.00	2.96
22-Aug-20	1.21	3.40	2.36	--	--	--	0.00	7.64	2.35
23-Aug-20	1.36	3.37	2.39	--	--	--	0.00	5.52	2.18
24-Aug-20	1.62	4.00	2.70	--	--	--	0.00	7.66	2.49
25-Aug-20	2.15	4.19	2.75	2.40	2.48	2.48	0.00	8.00	2.96
26-Aug-20	1.77	4.00	2.54	2.45	3.23	2.73	0.00	8.00	3.10
27-Aug-20	1.80	4.00	2.61	2.40	3.59	2.72	0.00	5.95	2.64
28-Aug-20	1.67	4.00	2.61	2.23	3.61	2.82	0.00	8.00	3.52
29-Aug-20	2.00	4.20	2.80	2.00	3.61	2.70	0.00	6.67	3.37
30-Aug-20	2.00	4.15	2.73	2.40	3.99	2.81	0.00	7.67	2.11
31-Aug-20	2.30	4.93	2.99	2.40	4.18	2.92	0.00	8.00	3.67
	0.68[#]	4.93[#]	2.53	2.00[#]	4.18[#]	2.79	0.00[#]	8.00[#]	2.83

Source: Data on price of PX transactions from IEX and PXIL and data on DSM Price from NLDC.

* Weighted average price computed based on Area Clearing Volume (ACV) and Area Clearing Price (ACP) for each hour of the day. Here, ACV and ACP represent the scheduled volume and weighted average price of all the bid areas of power exchanges.

** Simple average price of DSM of 96 time blocks of 15 minutes each in a day. DSM price includes Ceiling DSM Rate +40% additional DSM charge.

Maximum/Minimum in the month

Table-23: PRICE OF REAL TIME MARKET TRANSACTIONS OF ELECTRICITY (DAY-WISE) (₹/kWh), AUGUST 2020						
Market Segment	Real Time market of IEX			Real Time market of PXIL		
Date	Minimum ACP	Maximum ACP	Weighted Average Price*	Minimum ACP	Maximum ACP	Weighted Average Price*
1-Aug-20	0.60	3.22	2.38	--	--	--
2-Aug-20	0.10	2.99	1.94	--	--	--
3-Aug-20	0.20	2.65	2.00	--	--	--
4-Aug-20	1.40	3.00	1.86	--	--	--
5-Aug-20	1.20	2.90	2.20	--	--	--
6-Aug-20	1.40	3.61	1.81	--	--	--
7-Aug-20	1.40	5.20	2.79	--	--	--
8-Aug-20	1.20	4.40	3.04	--	--	--
9-Aug-20	1.04	3.30	2.59	--	--	--
10-Aug-20	1.50	3.60	2.52	--	--	--
11-Aug-20	1.40	3.50	2.01	--	--	--
12-Aug-20	1.50	3.50	2.27	--	--	--
13-Aug-20	0.20	3.15	2.07	--	--	--
14-Aug-20	0.20	3.50	2.41	--	--	--
15-Aug-20	0.70	2.79	1.67	--	--	--
16-Aug-20	0.20	3.12	1.82	--	--	--
17-Aug-20	0.20	4.20	2.43	--	--	--
18-Aug-20	0.20	3.60	2.19	--	--	--
19-Aug-20	1.40	2.85	1.94	--	--	--
20-Aug-20	0.20	3.40	1.87	--	--	--
21-Aug-20	1.00	4.35	2.32	--	--	--
22-Aug-20	1.20	3.15	2.13	--	--	--
23-Aug-20	0.80	3.60	2.00	--	--	--
24-Aug-20	2.00	4.01	2.56	--	--	--
25-Aug-20	1.50	4.30	2.72	--	--	--
26-Aug-20	2.20	4.00	2.59	--	--	--
27-Aug-20	0.60	4.10	2.82	--	--	--
28-Aug-20	0.90	4.60	2.80	--	--	--
29-Aug-20	2.01	4.60	2.95	--	--	--
30-Aug-20	1.68	3.30	2.26	--	--	--
31-Aug-20	0.33	5.21	2.65	--	--	--
	0.10[#]	5.21[#]	2.36	-	-	-

Source:IEX and PXIL

* Weighted average price computed based on Area Clearing Volume (ACV) and Area Clearing Price (ACP) for each hour of the day. Here, ACV and ACP represent the scheduled volume and weighted average price of all the bid areas of power exchanges.

Maximum/Minimum in the month

Table-24: VOLUME OF SHORT-TERM TRANSACTIONS OF ELECTRICITY (REGIONAL ENTITY*-WISE) (MUs), AUGUST 2020

Name of the Entity	Through Bilateral			Through Power Exchange (DAM + RTM)			Through DSM with Regional Grid			Total Net***
	Sale	Purchase	Net**	Sale	Purchase	Net**	Import (Over Draw)	Export (Under Draw)	Net**	
PUNJAB	0.00	1423.79	1423.79	1.18	90.17	88.99	41.25	28.29	12.96	1525.74
HARYANA	0.00	832.84	832.84	2.42	846.75	844.33	84.73	29.97	54.76	1731.94
RAJASTHAN	67.39	98.88	31.49	22.39	154.48	132.10	68.09	122.10	-54.00	109.58
DELHI	0.00	581.90	581.90	43.00	252.61	209.61	10.32	48.99	-38.67	752.84
U P	0.34	466.64	466.30	148.66	299.44	150.78	81.81	83.40	-1.59	615.49
UTTARAKHAND	260.40	1.34	-259.06	0.00	223.15	223.15	31.51	15.86	15.64	-20.26
HIMACHAL P	702.58	0.00	-702.58	436.44	25.99	-410.45	25.55	9.09	16.47	-1096.57
J & K	48.86	0.00	-48.86	365.19	0.00	-365.19	28.65	53.99	-25.34	-439.39
CHANDIGARH	0.00	0.00	0.00	33.46	0.55	-32.91	7.68	4.85	2.83	-30.08
MP	617.59	76.75	-540.84	81.48	27.49	-53.99	27.25	106.25	-79.00	-673.83
MAHARASHTRA	150.14	14.57	-135.57	37.68	666.04	628.36	39.09	92.97	-53.88	438.90
GUJARAT	129.45	0.72	-128.72	191.62	482.60	290.97	69.18	79.37	-10.19	152.06
CHHATTISGARH	11.90	60.32	48.42	77.61	17.79	-59.83	23.43	26.93	-3.50	-14.91
GOA	2.79	38.91	36.12	69.37	0.14	-69.23	5.48	6.84	-1.35	-34.46
DAMAN AND DIU	0.00	0.00	0.00	0.00	1.86	1.86	7.14	1.23	5.91	7.77
DADRA & NAGAR H	0.00	1.82	1.82	2.74	37.90	35.16	5.08	4.40	0.68	37.66
ANDHRA P	28.09	6.45	-21.64	6.00	365.10	359.10	60.90	43.09	17.81	355.26
KARNATAKA	34.60	0.03	-34.57	269.80	84.82	-184.98	35.10	89.39	-54.29	-273.84
KERALA	108.29	0.00	-108.29	14.99	48.55	33.56	19.06	11.27	7.79	-66.94
TAMIL NADU	406.08	12.23	-393.84	8.65	361.07	352.42	39.56	107.12	-67.57	-108.99
PONDICHERRY	0.00	0.00	0.00	0.00	0.00	0.00	3.44	7.62	-4.18	-4.18
TELANGANA	6.16	234.38	228.21	48.49	666.47	617.97	47.95	76.28	-28.33	817.86
WEST BENGAL	4.05	186.81	182.76	29.55	142.03	112.48	78.26	11.97	66.30	361.54
ODISHA	18.52	14.15	-4.37	374.49	60.34	-314.14	17.26	43.26	-26.00	-344.52
BIHAR	0.00	145.53	145.53	20.82	180.88	160.06	71.11	55.27	15.84	321.43
JHARKHAND	0.00	139.11	139.11	91.70	1.50	-90.20	13.89	22.99	-9.10	39.82
SIKKIM	18.60	0.00	-18.60	54.73	0.11	-54.62	1.31	3.78	-2.47	-75.69
DVC	39.73	0.00	-39.73	4.61	0.51	-4.10	29.06	17.57	11.48	-32.34
ARUNACHAL P	36.00	0.16	-35.84	18.58	0.35	-18.22	7.12	2.85	4.27	-49.80
ASSAM	0.00	61.07	61.07	27.90	164.58	136.68	23.67	8.59	15.08	212.82
MANIPUR	37.71	0.00	-37.71	5.99	12.20	6.21	2.93	2.35	0.58	-30.92
MEGHALAYA	39.58	0.00	-39.58	19.89	8.94	-10.95	1.22	11.49	-10.27	-60.79
MIZORAM	0.00	0.00	0.00	2.17	0.00	-2.17	1.77	3.17	-1.40	-3.57
NAGALAND	9.26	0.00	-9.26	0.86	3.64	2.78	1.04	2.42	-1.38	-7.86
TRIPURA	0.00	0.00	0.00	1.19	2.43	1.25	5.89	8.74	-2.86	-1.61
NTPC STNS-NR	0.00	0.00	0.00	0.63	0.00	-0.63	41.25	46.73	-5.48	-6.11
NHPC STNS	0.00	0.00	0.00	0.00	0.00	0.00	15.26	78.13	-62.87	-62.87
NFF	0.00	0.00	0.00	0.00	0.00	0.00	0.22	0.18	0.05	0.05
RAIL	0.00	0.00	0.00	0.00	0.00	0.00	3.61	2.24	1.37	1.37
NEP	0.00	0.00	0.00	0.00	0.00	0.00	0.67	0.00	0.67	0.67
NAPP	0.00	0.00	0.00	0.00	0.00	0.00	3.50	1.92	1.58	1.58
RAP B	0.00	0.00	0.00	0.00	0.00	0.00	0.49	1.30	-0.81	-0.81
NJPC	0.00	0.00	0.00	1.16	0.00	-1.16	1.27	6.10	-4.84	-6.00
TEHRI	0.00	0.00	0.00	0.00	0.00	0.00	1.96	4.48	-2.52	-2.52
BBMB	0.00	0.00	0.00	0.00	0.00	0.00	3.92	14.00	-10.08	-10.08
RAP C	0.00	0.00	0.00	0.00	0.00	0.00	3.24	4.64	-1.40	-1.40
AD HYDRO	20.83	0.00	-20.83	110.10	0.02	-110.08	7.13	3.70	3.43	-127.48
IGSTPS	0.00	0.00	0.00	0.00	0.00	0.00	6.30	0.54	5.76	5.76
KOTESHWAR	0.00	0.00	0.00	0.00	0.00	0.00	1.45	2.50	-1.05	-1.05
KARCHAM WANGT	0.00	0.00	0.00	93.66	0.00	-93.66	5.69	15.36	-9.67	-103.33
SHREE CEMENT	0.00	0.00	0.00	0.00	0.00	0.00	0.34	0.32	0.02	0.02
LANCO BUDHIL	0.00	0.00	0.00	6.52	0.00	-6.52	1.44	0.06	1.37	-5.15
RAMPUR HEP	0.00	0.00	0.00	0.58	0.00	-0.58	0.23	1.81	-1.58	-2.16
SAINJ HEP	12.80	0.00	-12.80	65.11	0.00	-65.11	1.26	0.66	0.60	-77.31
RENEW_SLR	0.00	0.00	0.00	0.00	0.00	0.00	1.27	0.91	0.36	0.36
AZURE_SLR	0.00	0.00	0.00	0.00	0.00	0.00	3.28	4.16	-0.89	-0.89
SB_SLR	0.00	0.00	0.00	0.00	0.00	0.00	3.65	4.55	-0.90	-0.90
ACME_SLR	0.00	0.00	0.00	0.00	0.00	0.00	4.15	3.49	0.66	0.66

AZURE34_SLR	0.00	0.00	0.00	0.00	0.00	0.00	2.76	2.96	-0.20	-0.20
TATA_SLR	0.00	0.00	0.00	0.00	0.00	0.00	2.94	3.73	-0.79	-0.79
RENEW_SLR_BKN	0.00	0.00	0.00	0.00	0.00	0.00	4.57	5.24	-0.67	-0.67
CLEAN_SLR	0.00	0.00	0.00	0.00	0.00	0.00	7.26	6.49	0.77	0.77
ARERJL_SLR	0.00	0.00	0.00	0.00	0.00	0.00	3.65	4.34	-0.68	-0.68
KSMPL_SLR	0.00	0.00	0.00	0.00	0.00	0.00	0.85	1.77	-0.92	-0.92
ADANI GREEN	0.00	0.00	0.00	4.52	0.00	-4.52	0.48	0.83	-0.35	-4.87
NTPC STNS-WR	0.00	0.00	0.00	29.57	0.00	-29.57	54.57	124.01	-69.44	-99.02
BHADRAVATHI HVI	0.00	0.00	0.00	0.00	0.00	0.00	0.01	0.63	-0.62	-0.62
VINDHYACHAL HVI	0.00	0.00	0.00	0.00	0.00	0.00	0.00	0.16	-0.16	-0.16
JINDAL POWER	0.00	0.00	0.00	88.10	0.00	-88.10	0.90	8.64	-7.74	-95.84
LANKO_AMK	10.24	0.00	-10.24	0.00	0.00	0.00	0.70	3.58	-2.88	-13.11
NSPCL	0.00	0.00	0.00	1.41	0.00	-1.41	1.43	2.76	-1.33	-2.73
ACBIL	0.73	0.00	-0.73	13.34	0.00	-13.34	1.99	4.20	-2.20	-16.28
BALCO	15.42	0.00	-15.42	8.00	0.00	-8.00	20.19	0.45	19.74	-3.69
RGPPL (DABHOL)	0.00	0.00	0.00	1.82	0.00	-1.82	19.61	0.07	19.54	17.72
CGPL	0.00	0.00	0.00	0.00	0.00	0.00	37.27	5.69	31.58	31.58
DCPP	0.00	0.00	0.00	0.00	0.00	0.00	0.01	0.02	0.00	0.00
EMCO	38.57	0.00	-38.57	61.91	0.00	-61.91	13.51	6.03	7.49	-92.99
KSK MAHANADI	0.00	0.00	0.00	0.00	0.00	0.00	3.18	2.75	0.43	0.43
ESSAR POWER	164.35	0.00	-164.35	105.66	0.00	-105.66	9.76	4.57	5.20	-264.81
JINDAL STAGE-II	0.00	0.00	0.00	41.20	0.00	-41.20	1.75	15.55	-13.80	-55.00
DB POWER	206.91	0.00	-206.91	42.82	0.00	-42.82	5.14	3.15	1.99	-247.74
DHARIWAL POWER	0.00	0.00	0.00	0.24	0.00	-0.24	0.51	1.92	-1.41	-1.65
JAYPEE NIGRIE	62.59	0.00	-62.59	214.59	0.00	-214.59	0.59	6.88	-6.30	-283.48
DGEN MEGA POWER	16.56	0.00	-16.56	57.84	0.00	-57.84	2.13	1.17	0.97	-73.43
KORBA WEST POWER	0.00	0.00	0.00	14.03	0.00	-14.03	0.00	0.00	0.00	-14.03
MB POWER	7.94	0.00	-7.94	60.10	0.00	-60.10	4.22	7.26	-3.05	-71.09
MARUTI COAL	0.00	0.00	0.00	33.46	0.00	-33.46	0.00	0.00	0.00	-33.46
SPECTRUM	0.00	0.00	0.00	26.53	0.00	-26.53	0.00	0.00	0.00	-26.53
JHABUA POWER_M	0.00	0.00	0.00	40.37	0.00	-40.37	8.54	1.64	6.90	-33.47
SASAN UMPP	0.00	0.00	0.00	10.53	0.00	-10.53	0.97	50.02	-49.05	-59.58
TRN ENERGY	3.75	0.00	-3.75	3.45	0.00	-3.45	0.51	2.36	-1.85	-9.04
RKM POWER	224.62	0.00	-224.62	0.00	0.00	0.00	1.71	2.73	-1.02	-225.63
SKS POWER	30.71	0.00	-30.71	2.46	0.00	-2.46	1.35	1.74	-0.39	-33.55
BARC	0.00	0.00	0.00	0.00	0.00	0.00	0.00	3.63	-3.63	-3.63
KAPP 3&4	0.00	0.00	0.00	0.00	0.00	0.00	6.91	0.00	6.91	6.91
HVDC CHAMPA	0.00	0.00	0.00	0.00	0.00	0.00	0.01	1.45	-1.44	-1.44
MAHINDRA_RUMS	0.00	0.00	0.00	0.00	0.00	0.00	6.51	7.94	-1.43	-1.43
ARINSUM_RUMS	0.00	0.00	0.00	0.00	0.00	0.00	5.46	5.95	-0.49	-0.49
OSTRO	0.00	0.00	0.00	0.00	0.00	0.00	6.50	9.92	-3.42	-3.42
ACME_RUMS	0.00	0.00	0.00	0.00	0.00	0.00	5.55	5.88	-0.33	-0.33
RENEW_BHACHAU	0.00	0.00	0.00	0.00	0.00	0.00	7.53	8.30	-0.77	-0.77
GIWEL_BHUJ	0.00	0.00	0.00	0.00	0.00	0.00	11.83	21.53	-9.71	-9.71
INOX_BHUJ	0.00	0.00	0.00	0.00	0.00	0.00	4.58	8.24	-3.66	-3.66
AGEMPL BHUJ	0.00	0.00	0.00	0.00	0.00	0.00	5.95	7.70	-1.75	-1.75
REGL	44.16	0.00	-44.16	33.17	0.00	-33.17	4.12	1.47	2.65	-74.67
RPREL	145.52	0.00	-145.52	164.73	2.41	-162.32	19.37	8.82	10.55	-297.29
AMPS Hazira	0.00	4.99	4.99	0.00	116.73	116.73	22.03	21.34	0.69	122.41
HVDC RAIGARH	0.00	0.00	0.00	0.00	0.00	0.00	0.04	0.05	-0.01	-0.01
ALFANAR_BHUJ	0.00	0.00	0.00	0.00	0.00	0.00	0.00	6.10	-6.10	-6.10
NTPC STNS-SR	0.00	0.00	0.00	9.64	0.00	-9.64	37.11	25.16	11.95	2.31
LANKO KONDAPAL	0.00	0.00	0.00	0.00	0.00	0.00	0.52	0.00	0.52	0.52
SIMHAPURI	0.00	0.00	0.00	0.00	0.00	0.00	0.36	0.00	0.36	0.36
MEENAKSHI	0.00	0.00	0.00	0.00	0.00	0.00	0.55	0.00	0.55	0.55
COASTGEN	0.00	0.00	0.00	0.00	0.00	0.00	4.76	1.04	3.72	3.72
THERMAL POWER	0.00	0.00	0.00	24.41	0.00	-24.41	7.48	2.29	5.19	-19.21
IL&FS	0.00	0.00	0.00	1.72	0.00	-1.72	2.72	0.71	2.00	0.28
NLC	0.00	0.00	0.00	79.11	0.00	-79.11	23.73	19.50	4.23	-74.88
SEMBCORP	333.61	0.00	-333.61	229.17	0.00	-229.17	4.26	4.45	-0.19	-562.97
NETCL VALLUR	0.00	0.00	0.00	0.00	0.00	0.00	11.98	0.24	11.74	11.74
NTPL	0.00	0.00	0.00	0.00	0.00	0.00	3.50	1.44	2.07	2.07
AHSP_ANTP	0.00	0.00	0.00	0.00	0.00	0.00	0.94	0.97	-0.03	-0.03
AKSP_ANTP	0.00	0.00	0.00	0.00	0.00	0.00	0.92	0.93	-0.01	-0.01
ABSP_ANTP	0.00	0.00	0.00	0.00	0.00	0.00	0.91	1.00	-0.087	-0.087

AZURE_ANTP	0.00	0.00	0.00	0.00	0.00	0.00	0.55	1.32	-0.77	-0.77
TATA_ANTP	0.00	0.00	0.00	0.00	0.00	0.00	1.97	1.49	0.48	0.48
FRV_ANTP	0.00	0.00	0.00	0.00	0.00	0.00	0.85	1.17	-0.32	-0.32
NTPC_ANTP	0.00	0.00	0.00	0.00	0.00	0.00	4.95	2.29	2.66	2.66
GIWEL_TCN	0.00	0.00	0.00	0.00	0.00	0.00	10.35	7.70	2.65	2.65
MYTRAH_TCN	0.00	0.00	0.00	0.00	0.00	0.00	9.86	3.52	6.34	6.34
FRV_NPK	0.00	0.00	0.00	0.00	0.00	0.00	0.89	1.18	-0.29	-0.29
ORANGE_TCN	0.00	0.00	0.00	0.00	0.00	0.00	6.22	7.90	-1.69	-1.69
BETAM_TCN	0.00	0.00	0.00	0.00	0.00	0.00	2.06	4.64	-2.58	-2.58
SBG_PVGD	0.00	0.00	0.00	0.00	0.00	0.00	4.45	3.72	0.73	0.73
SBG_NPK	0.00	0.00	0.00	0.00	0.00	0.00	4.29	5.02	-0.73	-0.73
FORTUM1_PVGD	0.00	0.00	0.00	0.00	0.00	0.00	1.50	2.08	-0.58	-0.58
PARAM_PVGD	0.00	0.00	0.00	0.00	0.00	0.00	2.06	3.61	-1.55	-1.55
YARROW_PVGD	0.00	0.00	0.00	0.00	0.00	0.00	0.84	1.23	-0.39	-0.39
TATA_PVGD	0.00	0.00	0.00	0.00	0.00	0.00	6.65	6.85	-0.20	-0.20
RENEW_PVGD	0.00	0.00	0.00	0.00	0.00	0.00	1.34	1.08	0.26	0.26
AKS_PVGD	0.00	0.00	0.00	0.00	0.00	0.00	1.08	0.91	0.17	0.17
ARS_PVGD	0.00	0.00	0.00	0.00	0.00	0.00	0.95	1.54	-0.59	-0.59
AVAADA1_PVGD	0.00	0.00	0.00	0.00	0.00	0.00	3.15	3.12	0.03	0.03
ADY1_PVGD	0.00	0.00	0.00	0.00	0.00	0.00	1.02	1.57	-0.55	-0.55
ADY2_PVGD	0.00	0.00	0.00	0.00	0.00	0.00	1.08	1.41	-0.33	-0.33
ADY13_PVGD	0.00	0.00	0.00	0.00	0.00	0.00	0.89	2.02	-1.13	-1.13
ADY3_PVGD	0.00	0.00	0.00	0.00	0.00	0.00	0.95	1.15	-0.20	-0.20
ADY6_PVGD	0.00	0.00	0.00	0.00	0.00	0.00	0.93	1.16	-0.24	-0.24
ADY10_PVGD	0.00	0.00	0.00	0.00	0.00	0.00	1.05	1.33	-0.28	-0.28
AZURE_PVGD	0.00	0.00	0.00	0.00	0.00	0.00	1.88	3.59	-1.72	-1.72
FORTUM2_PVGD	0.00	0.00	0.00	0.00	0.00	0.00	4.84	6.53	-1.69	-1.69
AVAADA2_PVGD	0.00	0.00	0.00	0.00	0.00	0.00	3.38	3.18	0.20	0.20
KREDL_PVGD	0.00	0.00	0.00	0.00	0.00	0.00	3.28	0.14	3.14	3.14
NTPC STNS-ER	0.02	0.00	-0.02	4.14	0.00	-4.14	70.81	21.79	49.02	44.86
MAITHON POWER	0.00	0.00	0.00	0.03	0.00	-0.03	4.10	7.22	-3.12	-3.15
NPGC	0.00	0.00	0.00	0.00	0.00	0.00	4.05	2.28	1.77	1.77
ADHUNIK POWER L	139.11	0.00	-139.11	0.45	0.00	-0.45	1.51	7.16	-5.65	-145.21
CHUZACHEN HEP	0.00	0.00	0.00	85.34	0.17	-85.17	1.41	0.62	0.79	-84.38
RANGIT HEP	0.00	0.00	0.00	0.00	0.00	0.00	0.70	0.90	-0.19	-0.19
GMR KAMALANGA	44.64	0.00	-44.64	14.63	0.00	-14.63	5.45	1.92	3.53	-55.74
JITPL	124.65	0.00	-124.65	22.88	0.00	-22.88	2.06	1.16	0.90	-146.62
TEESTA HEP	0.00	0.00	0.00	0.00	0.00	0.00	0.20	7.03	-6.83	-6.83
DAGACHU	89.72	0.00	-89.72	0.00	0.00	0.00	5.36	0.00	5.36	-84.36
JORETHANG	0.00	0.00	0.00	66.10	4.99	-61.10	4.52	0.40	4.12	-56.98
NEPAL(NVVN)	0.00	41.52	41.52	0.00	0.00	0.00	13.72	1.89	11.83	53.35
BANGLADESH	0.00	146.27	146.27	0.00	0.00	0.00	6.07	2.53	3.54	149.81
HVDC PUS	0.00	0.00	0.00	0.00	0.00	0.00	0.19	0.03	0.15	0.15
TEESTA STG3	0.00	0.00	0.00	678.75	0.00	-678.75	6.25	4.66	1.60	-677.16
DIKCHU HEP	0.00	0.00	0.00	76.27	0.00	-76.27	0.79	2.25	-1.46	-77.72
HVDC ALPD	0.00	0.00	0.00	0.00	0.00	0.00	0.08	0.07	0.01	0.01
TASHIDENG HEP	0.00	0.00	0.00	63.50	4.22	-59.28	4.12	1.82	2.29	-56.99
BRBCL,NABINAGAR	0.00	0.00	0.00	0.00	0.00	0.00	4.38	2.26	2.12	2.12
MTPS II	0.00	0.00	0.00	0.00	0.00	0.00	1.52	0.37	1.15	1.15
TALA HEP	0.00	0.00	0.00	0.00	0.00	0.00	147.92	0.00	147.92	147.92
CHUKHA HEP	0.00	0.00	0.00	0.00	0.00	0.00	0.04	61.43	-61.39	-61.39
KURICHU HEP	0.00	0.00	0.00	0.00	0.00	0.00	0.03	64.89	-64.85	-64.85
MANGDECHU HEP	0.00	0.00	0.00	0.00	0.00	0.00	7.33	7.77	-0.44	-0.44
NTPC STNS-NER	0.19	0.00	-0.19	1.32	0.00	-1.32	2.62	1.44	1.18	-0.33
NEEPCO STNS	0.00	0.00	0.00	95.40	0.00	-95.40	0.98	9.41	-8.43	-103.83
RANGANADI HEP	0.00	0.00	0.00	0.00	0.00	0.00	0.54	3.64	-3.10	-3.10
DOYANG HEP	0.00	0.00	0.00	0.00	0.00	0.00	0.11	0.23	-0.12	-0.12
ONGC PALATANA	56.59	0.00	-56.59	54.95	0.00	-54.95	1.26	1.24	0.03	-111.52
LOKTAK	0.00	0.00	0.00	0.00	0.00	0.00	0.19	0.36	-0.17	-0.17
PARE HEP	0.00	0.00	0.00	0.00	0.00	0.00	0.62	0.68	-0.06	-0.06

Source: NLDC

* in case of a state, the entities which are "selling" also include generators connected to state grid and the entities which are "buying" also include open access consumers.

** (-) indicates sale and (+) indicates purchase,

*** Total net includes net of transactions through bilateral, power exchange and DSM